

# MAPK11 Rabbit pAb

货号: B16232

产品信息

反应	Human,Mouse,Rat
宿主	Rabbit
克隆性	Polyclonal
预测反应	
应用	WB IHC
推荐浓度	<b>WB:</b> 1:500 - 1:2000 <b>IHC:</b> 1:50 - 1:100
理论分子量	23kDa/41kDa
实测分子量	41kDa
形式	Liquid
保存条件	Store at -20°C. Avoid freeze / thaw cycles. Buffer: PBS with 0.02% sodium azide,50% glycerol,pH7.3.
偶联物	Unconjugated
阳性对照	22Rv1,SW620,Mouse brain,Mouse kidney,Mouse liver,Rat brain
细胞定位	Cytoplasm,Nucleus
纯化	Affinity purification

抗原信息

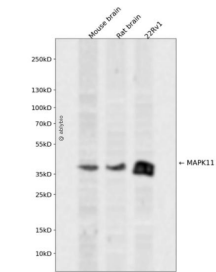
抗原信息	A synthetic peptide corresponding to a sequence within amino acids 300-400 of human MAPK11 (Q15759 ).
序列	AEALAHAYFSQYHDPEDPEAEPYDESVEAKERTLEEWKELTYQEVLSFKPPEPPKPPGSLEIEQ

靶点信息

研究背景	This gene encodes a member of a family of protein kinases that are involved in the integration of biochemical signals for a wide variety of cellular processes, including cell proliferation, differentiation, transcriptional regulation, and development. The encoded protein can be activated by proinflammatory cytokines and environmental stresses through phosphorylation by mitogen activated protein kinase kinases (MKKs). Alternative splicing results in multiple transcript variants.
基因ID	5600

基因名	MAPK11
Swiss	Q15759
别名	MAPK11;P38B;P38BETA2;PRKM11;SAPK2;SAPK2B;p38-2;p38Beta

产品验证



Western blot analysis of MAPK11 expressed in Mouse brain,Rat brain,22Rv1 using MAPK11 Rabbit pAb at 1:1000. Secondary antibody: HRP Goat Anti-Rabbit IgG (H+L) at 1:5000. Lysates/proteins: 30ug per lane. Blocking buffer: 5% non-fat dry milk in TBST. Detection: ECL Enhanced Kit. Exposure time: 120s.

实验步骤

访问官网浏览详情: [www.ablybio.cn](http://www.ablybio.cn)