

# CLDN18 Rabbit pAb

货号: B16008

产品信息

反应	Human,Mouse,Rat
宿主	Rabbit
克隆性	Polyclonal
预测反应	
应用	WB
推荐浓度	<b>WB:</b> 1:500 - 1:1000
理论分子量	27kDa
实测分子量	28KDa
形式	Liquid
保存条件	Store at -20°C. Avoid freeze / thaw cycles. Buffer: PBS with 0.01% thiomersal,50% glycerol,pH7.3.
偶联物	Unconjugated
阳性对照	NUGC-4,Mouse lung
细胞定位	Cell junction,Cell membrane,Multi-pass membrane protein,tight junction
纯化	Affinity purification

抗原信息

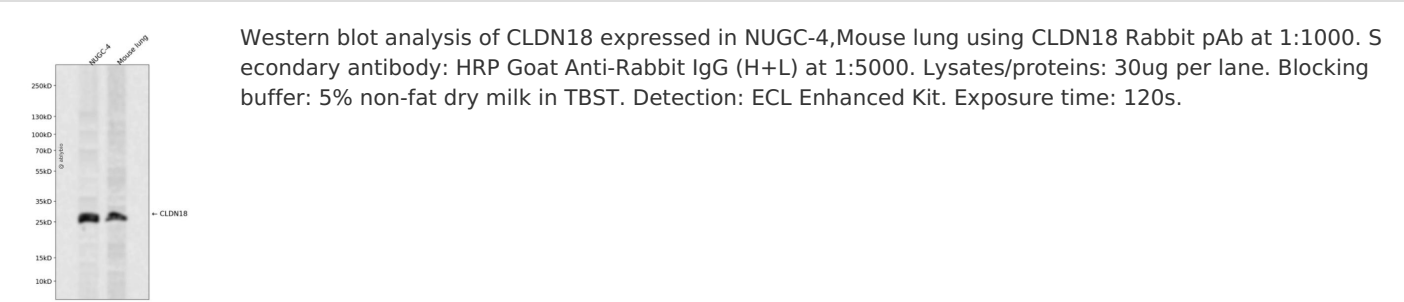
抗原信息	Recombinant fusion protein containing a sequence corresponding to amino acids 200-261 of human CLD N18 (NP_057453.1).
序列	APEETNYKAVSYHASGHSVAYKPGGFKASTGFGSNTKNKKIYDGGARTEDEVQSYPSKHDYV

靶点信息

研究背景	<p>This gene encodes a member of the claudin family. Claudins are integral membrane proteins and components of tight junction strands. Tight junction strands serve as a physical barrier to prevent solutes and water from passing freely through the paracellular space between epithelial or endothelial cell sheets, and also play critical roles in maintaining cell polarity and signal transductions. This gene is upregulated in patients with ulcerative colitis and highly overexpressed in infiltrating ductal adenocarcinomas.</p> <p>PKC/MAPK/AP-1 (protein kinase C/mitogen-activated protein kinase/activator protein-1) dependent pathway regulates the expression of this gene in gastric cells. Alternatively spliced transcript variants encoding different isoforms have been identified.</p>
------	---

基因ID	51208
基因名	CLDN18
Swiss	P56856
别名	CLDN18;SFTA5;SFTPJ

产品验证



实验步骤

访问官网浏览详情: [www.ablybio.cn](http://www.ablybio.cn)