

# SART1 Rabbit pAb

货号: B15932

产品信息

反应	Human,Mouse,Rat
宿主	Rabbit
克隆性	Polyclonal
预测反应	
应用	WB IHC IP
推荐浓度	<b>WB:</b> 1:500 - 1:2000 <b>IHC:</b> 1:50 - 1:200 <b>IP:</b> 1:20 - 1:50
理论分子量	90kDa
实测分子量	120kDa
形式	Liquid
保存条件	Store at -20°C. Avoid freeze / thaw cycles. Buffer: PBS with 0.02% sodium azide,50% glycerol,pH7.3.
偶联物	Unconjugated
阳性对照	HeLa,Jurkat,HepG2,Mouse liver,Mouse brain,Mouse testis,Rat brain
细胞定位	Nucleus
纯化	Affinity purification

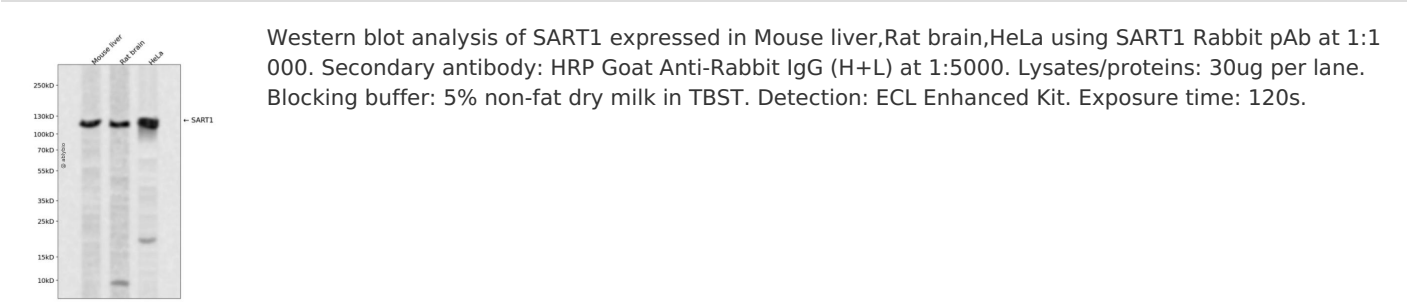
抗原信息

抗原信息	Recombinant fusion protein containing a sequence corresponding to amino acids 1-255 of human SART1 (NP_005137.1).
序列	MGSSKKHRGEKEAAGTTAAAGTGGATEQPPRHREHKKHKHRSGGSGGSGGERRKRSRERGGERGSGRRGAEEARS STHGRERSQAEPSERRVKREKRDDGYEAAASSKTSSGDASSLSIEETNKLRAKLGLKPLEVNAIKKEAGTKEEPVTADVINP MALRQREELREKLAAAKEKRLLNQKLGKIKTLGEDDPWLDDTAAWIERSRQLQKEKDLAEKRAKLEEMDQEFGVSTLVE EEFGQRRQDLYSARDLQ

靶点信息

研究背景	This gene encodes two proteins, the SART1(800) protein expressed in the nucleus of the majority of proliferating cells, and the SART1(259) protein expressed in the cytosol of epithelial cancers. The SART1(259) protein is translated by the mechanism of -1 frameshifting during posttranscriptional regulation; its full-length sequence is not published yet. The two encoded proteins are thought to be involved in the regulation of proliferation. Both proteins have tumor-rejection antigens. The SART1(259) protein possesses tumor epitopes capable of inducing HLA-A2402-restricted cytotoxic T lymphocytes in cancer patients. This SART1(259) antigen may be useful in specific immunotherapy for cancer patients and may serve as a paradigmatic tool for the diagnosis and treatment of patients with atopy. The SART1(259) protein is found to be essential for the recruitment of the tri-snRNP to the pre-spliceosome in the spliceosome assembly pathway.
基因ID	9092
基因名	SART1
Swiss	O43290
别名	SART1;Ara1;HOMS1;SART1259;SNRNP110;Snu66;HAF

产品验证



实验步骤

访问官网浏览详情: [www.ablybio.cn](http://www.ablybio.cn)