

SPAG8 Rabbit pAb

货号: B15870

产品信息

反应	Mouse,Rat
宿主	Rabbit
克隆性	Polyclonal
预测反应	
应用	WB IHC
推荐浓度	WB: 1:500 - 1:2000 IHC: 1:50 - 1:200
理论分子量	44kDa/51kDa/53kDa
实测分子量	45kDa
形式	Liquid
保存条件	Store at -20°C. Avoid freeze / thaw cycles. Buffer: PBS with 0.01% thiomersal,50% glycerol,pH7.3.
偶联物	Unconjugated
阳性对照	Mouse testis,Rat testis
细胞定位	Cytoplasmic vesicle,acrosome,secretory vesicle
纯化	Affinity purification

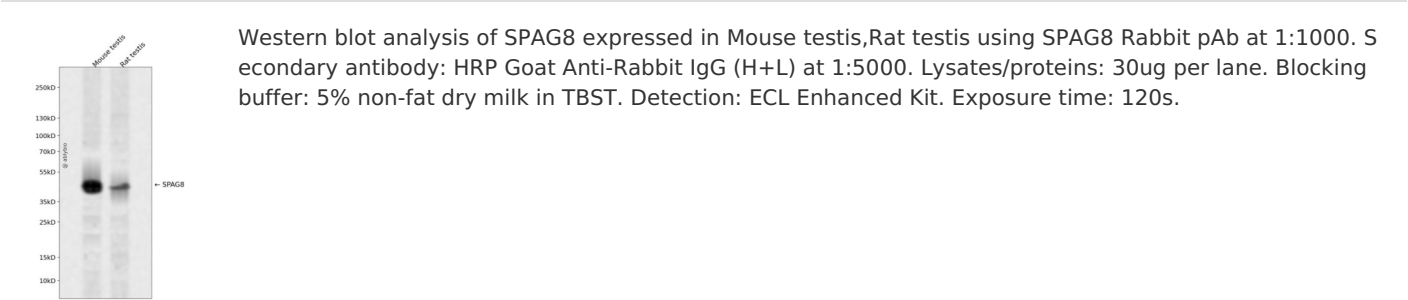
抗原信息

抗原信息	Recombinant fusion protein containing a sequence corresponding to amino acids 220-420 of human SPAG 8 (NP_758516.1).
序列	LVADRVPNYTSWSQHCPWEPQKQPPWEFLQVLEPGARGLWKPPDIKGKLMVCYETLPRGQCCLLYNWEEERATNHLQV PSMQDGSESEFFRHGHRGLLTMQLKSPMPSSTTQKDSYQPPGNVYWPLRGKREAMLEMLLQHQICKEVQAEQEPTRKL FEVESVTHHDYRMELAQAGTPAPTKPHDYRQEQPETFWIQRAPQL

靶点信息

研究背景	The correlation of anti-sperm antibodies with cases of unexplained infertility implicates a role for these antibodies in blocking fertilization. Improved diagnosis and treatment of immunologic infertility, as well as identification of proteins for targeted contraception, are dependent on the identification and characterization of relevant sperm antigens. The protein encoded by this gene is recognized by sperm agglutinating antibodies from an infertile woman. This protein is localized in germ cells of the testis at all stages of spermatogenesis and is localized to the acrosomal region of mature spermatozoa. This protein interacts with ACT (activator of CREM in testis) and may play a role in CREM (cAMP response element modulator)-ACT-mediated gene transcription during spermatogenesis. This protein may also play a role in spermatogenesis by regulating microtubule formation and cell division. Alternatively spliced variants that encode different protein isoforms have been described but the full-length sequences of only two have been determined.
基因ID	26206
基因名	SPAG8
Swiss	Q99932
别名	SPAG8;BS-84;CILD28;CT142;HSD-1;SMP1;SPAG3;hSMP-1

产品验证



实验步骤

访问官网浏览详情: www.ablybio.cn