

# RGS10 Rabbit pAb

货号: **B15697**

产品信息

反应	Human,Mouse,Rat
宿主	Rabbit
克隆性	Polyclonal
预测反应	
应用	WB IHC
推荐浓度	<b>WB:</b> 1:500 - 1:2000 <b>IHC:</b> 1:50 - 1:200
理论分子量	19kDa/20kDa/21kDa
实测分子量	20kDa
形式	Liquid
保存条件	Store at -20°C. Avoid freeze / thaw cycles. Buffer: PBS with 0.02% sodium azide,50% glycerol,pH7.3.
偶联物	Unconjugated
阳性对照	HeLa,HepG2,HT-1080,Jurkat,Rat brain
细胞定位	cytoplasm,cytosol,nucleus,plasma membrane,synapse
纯化	Affinity purification

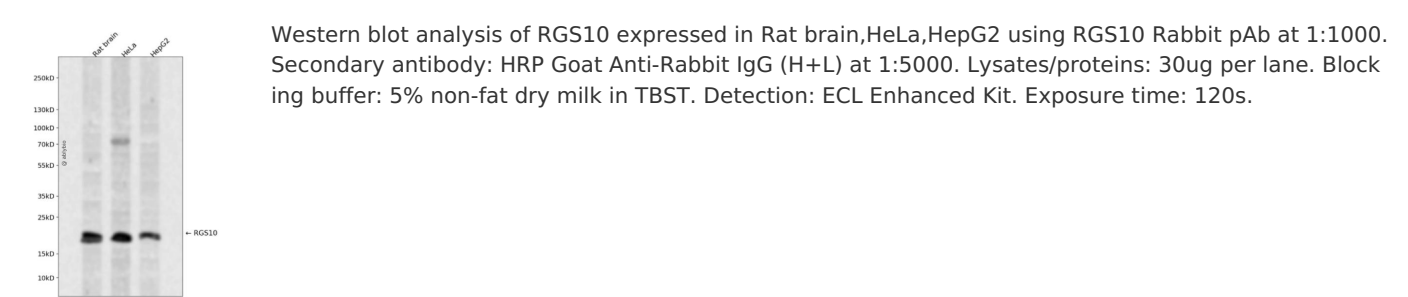
抗原信息

抗原信息	Recombinant fusion protein containing a sequence corresponding to amino acids 1-181 of human RGS10 (NP_001005339.1).
序列	MFNRAVSRLSRKRPPSDIHSDGSSSSSHQSLKSTAKWAASLENLLEDPEGVKRFRFLKKEFSEENVLFWLACEDFKKM QDKTQMQEKAKEIYMTFLSSKASSQVNVEGQSRLNEKILEEPHPLMFQKLQDQIFNLMKYDSYSRFLKSDLFLKHKRTEEE EEDLPDAQTAAKRASRIYNT

靶点信息

研究背景	Regulator of G protein signaling (RGS) family members are regulatory molecules that act as GTPase activating proteins (GAPs) for G alpha subunits of heterotrimeric G proteins. RGS proteins are able to deactivate G protein subunits of the Gi alpha, Go alpha and Gq alpha subtypes. They drive G proteins into their inactive GDP-bound forms. Regulator of G protein signaling 10 belongs to this family. All RGS proteins share a conserved 120-amino acid sequence termed the RGS domain. This protein associates specifically with the activated forms of the two related G-protein subunits, G-alpha13 and G-alpha12 but fails to interact with the structurally and functionally distinct G-alpha subunits. Regulator of G protein signaling 10 protein is localized in the nucleus. Two transcript variants encoding different isoforms have been found for this gene.
基因ID	6001
基因名	RGS10
Swiss	O43665
别名	RGS10

产品验证



实验步骤

访问官网浏览详情: [www.ablybio.cn](http://www.ablybio.cn)