

Phospho-PXN-Y118 Rabbit pAb

货号: B15641

产品信息

反应	Human,Mouse,Rat
宿主	Rabbit
克隆性	Polyclonal
预测反应	
应用	WB IHC
推荐浓度	WB: 1:500 - 1:2000 IHC: 1:50 - 1:100
理论分子量	46kDa/60kDa/64kDa/66kDa
实测分子量	70kDa
形式	Liquid
保存条件	Store at -20°C. Avoid freeze / thaw cycles. Buffer: PBS with 0.01% thiomersal,50% glycerol,pH7.3.
偶联物	Unconjugated
阳性对照	HeLa,3T3
细胞定位	Cell junction,Cytoplasm,cell cortex,cytoskeleton,focal adhesion
纯化	Affinity purification

抗原信息

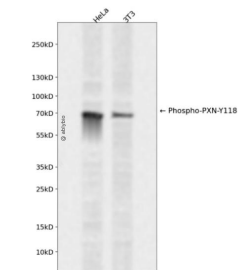
抗原信息	A synthetic phosphorylated peptide around Y118 of human Paxillin (NP_001074324.1).
序列	HVYSF

靶点信息

研究背景	This gene encodes a cytoskeletal protein involved in actin-membrane attachment at sites of cell adhesion to the extracellular matrix (focal adhesion). Alternatively spliced transcript variants encoding different isoforms have been described for this gene. These isoforms exhibit different expression pattern, and have different biochemical, as well as physiological properties (PMID:9054445).
基因ID	5829

基因名	PXN
Swiss	P49023
别名	Paxillin;PXN;paxillin

产品验证



Western blot analysis of Phospho-PXN-Y118 expressed in HeLa,3T3 using Phospho-PXN-Y118 Rabbit pAb at 1:1000. Secondary antibody: HRP Goat Anti-Rabbit IgG (H+L) at 1:5000. Lysates/proteins: 30 ug per lane. Blocking buffer: 5% non-fat dry milk in TBST. Detection: ECL Enhanced Kit. Exposure time: 120s.

实验步骤

访问官网浏览详情: www.ablybio.cn