

METTL2B Rabbit pAb

货号: B15601

产品信息

反应	Human
宿主	Rabbit
克隆性	Polyclonal
预测反应	
应用	WB
推荐浓度	WB: 1:500 - 1:2000
理论分子量	36kDa/43kDa
实测分子量	40kDa
形式	Liquid
保存条件	Store at -20°C. Avoid freeze / thaw cycles. Buffer: PBS with 0.01% thiomersal,50% glycerol,pH7.3.
偶联物	Unconjugated
阳性对照	HeLa,Jurkat,U-87MG,HT-29,A-431
细胞定位	cytoplasm
纯化	Affinity purification

抗原信息

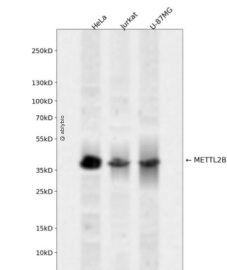
抗原信息	Recombinant fusion protein containing a sequence corresponding to amino acids 100-250 of human METTL2B (NP_060866.2).
序列	FPELAPSQNQNHDKDWFLFNKSEVCECRNNEGPGGLIMEEQHKCSSKSLEHKTQTPPVEENVNTQKISDLEICAEDEFPGSSA TYRILEVGCVGNTVFPILQTNDPGLFVYCCDFSSTAIELVQTNSEYDPSRCFAFVHDLCDDEKSYVPV

靶点信息

研究背景	This gene is a member of a family of methyltransferases that share homology with, but are distinct from, the UbiE family of methyltransferases. Alternatively spliced variants which encode different protein isoforms have been described; however, not all variants have been fully characterized.
基因ID	55798

基因名	METTL2B
Swiss	Q6P1Q9
别名	METTL2B;METL;METTL2;METTL2A;PSENIP1

产品验证



Western blot analysis of METTL2B expressed in HeLa,Jurkat,U-87MG using METTL2B Rabbit pAb at 1:1 000. Secondary antibody: HRP Goat Anti-Rabbit IgG (H+L) at 1:5000. Lysates/proteins: 30ug per lane. Blocking buffer: 5% non-fat dry milk in TBST. Detection: ECL Enhanced Kit. Exposure time: 120s.

实验步骤

访问官网浏览详情: www.ablybio.cn