

WDR35 Rabbit pAb

货号: B15575

产品信息

反应	Human,Mouse,Rat
宿主	Rabbit
克隆性	Polyclonal
预测反应	
应用	WB IF/ICC
推荐浓度	WB: 1:500 - 1:1000 IF/ICC: 1:50 - 1:200
理论分子量	132kDa/133kDa
实测分子量	133kDa
形式	Liquid
保存条件	Store at -20°C. Avoid freeze / thaw cycles. Buffer: PBS with 0.01% thiomersal,50% glycerol,pH7.3.
偶联物	Unconjugated
阳性对照	LO2
细胞定位	Cytoplasm,centrosome,cilium axoneme,cilium basal body,cytoskeleton,microtubule organizing center
纯化	Affinity purification

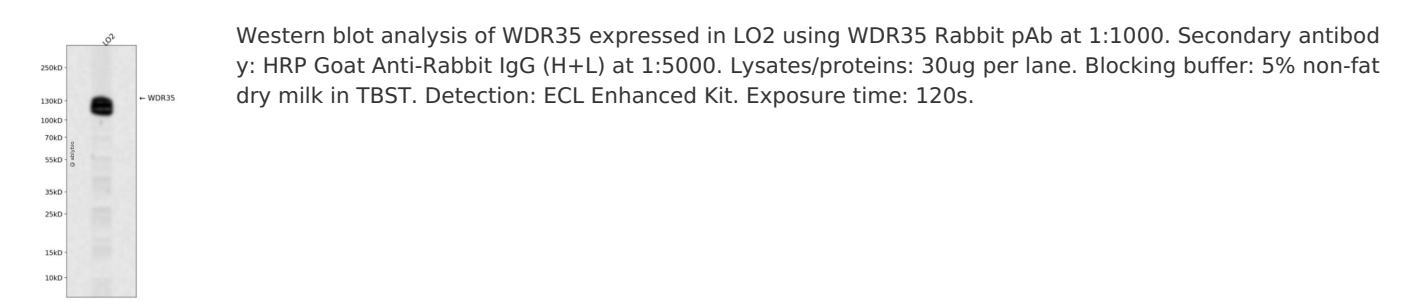
抗原信息

抗原信息	Recombinant fusion protein containing a sequence corresponding to amino acids 871-1170 of human WD R35 (NP_065830.2).
序列	CSQPKAAVDTCVHLNQWNKAVELAKNHSMKEIGSLLARYASHLLEKNKTLDAIELYRKANYFFDAAKLMFKIADEEAKKGS KPLRVKKLYVLSALLIEQYHEQMKNQQRGKVGKSSEATSALAGLLEEEVLSTTDRTDPAWRGAEAYHFFILAQRQLYEG CVDTALKTALHLKDYEDIIPPVEIYSLALCACASRAFGTCSKAFIKLSLETLSSEKQKQYEDLALEIFTKHTSKDNRKPELDS LMEGGEGKLPTCVATGSPITEYQFWMCSVCKHGVLAQEISHYSFCPLCHSPVG

靶点信息

研究背景	This gene encodes a member of the WD repeat protein family. WD repeats are minimally conserved regions of approximately 40 amino acids typically bracketed by gly-his and trp-aspartate (GH-WD), which may facilitate formation of heterotrimeric or multiprotein complexes. Members of this family are involved in a variety of cellular processes, including cell cycle progression, signal transduction, apoptosis, and gene regulation. Multiple alternatively spliced transcript variants encoding distinct isoforms have been found for this gene. Two patients with Sensenbrenner syndrome / cranioectodermal dysplasia (CED) were identified with mutations in this gene, consistent with a possible ciliary function.
基因ID	57539
基因名	WDR35
Swiss	Q9P2L0
别名	WDR35;CED2;IFT121;IFTA1;SRTD7

产品验证



实验步骤

访问官网浏览详情: www.ablybio.cn