

LIMS1 Rabbit pAb

货号: B15517

产品信息

反应	Human,Mouse
宿主	Rabbit
克隆性	Polyclonal
预测反应	
应用	WB IF/ICC
推荐浓度	WB: 1:500 - 1:2000 IF/ICC: 1:50 - 1:200
理论分子量	37kDa/38kDa/41kDa/44kDa
实测分子量	37kDa
形式	Liquid
保存条件	Store at -20°C. Avoid freeze / thaw cycles. Buffer: PBS with 0.02% sodium azide,50% glycerol,pH7.3.
偶联物	Unconjugated
阳性对照	Mouse heart
细胞定位	Cell junction,Cell membrane,Cytoplasmic side,Peripheral membrane protein,focal adhesion
纯化	Affinity purification

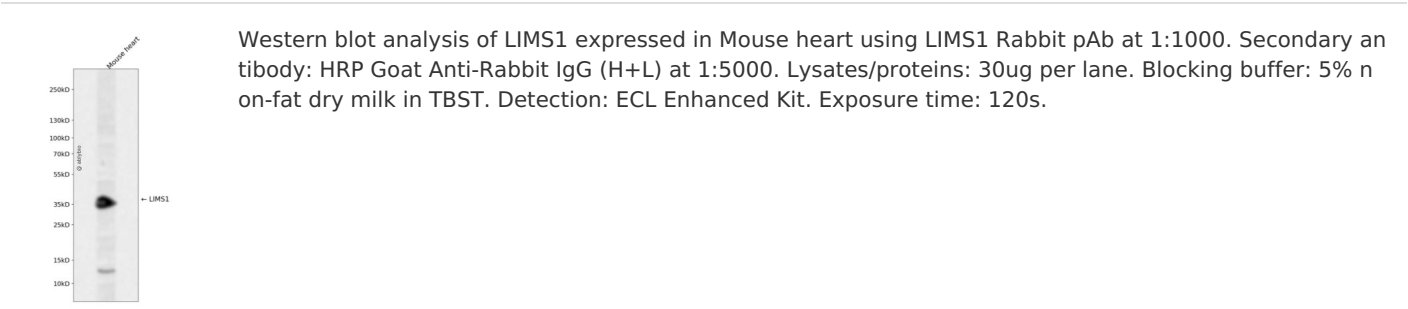
抗原信息

抗原信息	Recombinant fusion protein containing a sequence corresponding to amino acids 1-325 of human LIMS1 (NP_001180417.1).
序列	MANALASATCERCKGGFAPAEKIVNSNGELYHEQCFVCAQCFFQFPEGLFYEFEGRKYCEHDFQMLFAPCCHQCGEFIIG RVIKAMNNSWHPECFRCDLCQEVLDIGFVKNAGRHLCRPCHNREKARGLGKYICQKCHAIIDEQPLIFKNDPYHPDHFNC ANCGKELTADARELKGELYCLPCHDKMGVPICGACRRPIEGRVVNAMGKQWHVEHFVCAKCEKPFLGHRHYERKGLAYCE THYNQLFGDVCFHENRVIEGDVVSALNKAWCVNCFACSTCNTKLTNLKNKFVEFDMKPVCKKCYEKFPLELKKRLKKLAETL GRK

靶点信息

研究背景	The protein encoded by this gene is an adaptor protein which contains five LIM domains, or double zinc fingers. The protein is likely involved in integrin signaling through its LIM domain-mediated interaction with integrin-linked kinase, found in focal adhesion plaques. It is also thought to act as a bridge linking integrin-linked kinase to NCK adaptor protein 2, which is involved in growth factor receptor kinase signaling pathways. Its localization to the periphery of spreading cells also suggests that this protein may play a role in integrin-mediated cell adhesion or spreading. Several transcript variants encoding different isoforms have been found for this gene.
基因ID	3987
基因名	LIMS1
Swiss	P48059
别名	LIMS1;PINCH;PINCH-1;PINCH1

产品验证



实验步骤

访问官网浏览详情: www.ablybio.cn