

# DCN Rabbit pAb

货号: B15440

## 产品信息

反应	Human,Mouse,Rat
宿主	Rabbit
克隆性	Polyclonal
预测反应	
应用	WB IF/ICC
推荐浓度	<b>WB:</b> 1:500 - 1:1000 <b>IF/ICC:</b> 1:50 - 1:200
理论分子量	8kDa/19kDa/23kDa/27kDa/39kDa
实测分子量	45KDa/48KDa
形式	Liquid
保存条件	Store at -20°C. Avoid freeze / thaw cycles. Buffer: PBS with 0.05% proclin300,50% glycerol,pH7.3.
偶联物	Unconjugated
阳性对照	HeLa,Mouse heart,Rat heart
细胞定位	Secreted,extracellular matrix,extracellular space
纯化	Affinity purification

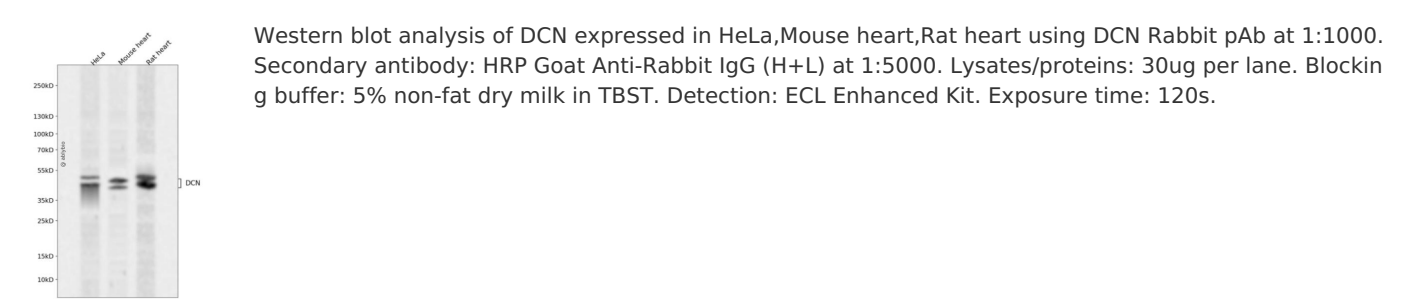
## 抗原信息

抗原信息	A synthetic peptide corresponding to a sequence within amino acids 200-300 of human DCN (NP_001911.1).
序列	KKLSYIRIADTNITSIPQGLPPSLTELHLDGNKISRVDAAASKGLNNLAKLGLSFNSISAVDNGSLANTPHLRELHLDNNKLTR VPGGLAEHKYIQVVYLH

## 靶点信息

研究背景	This gene encodes a member of the small leucine-rich proteoglycan family of proteins. Alternative splicing results in multiple transcript variants, at least one of which encodes a preproprotein that is proteolytically processed to generate the mature protein. This protein plays a role in collagen fibril assembly. Binding of this protein to multiple cell surface receptors mediates its role in tumor suppression, including a stimulatory effect on autophagy and inflammation and an inhibitory effect on angiogenesis and tumorigenesis. This gene and the related gene biglycan are thought to be the result of a gene duplication. Mutations in this gene are associated with congenital stromal corneal dystrophy in human patients.
基因ID	1634
基因名	DCN
Swiss	P07585
别名	DCN;CSCD;DSPG2;PG40;PGII;PGS2;SLRR1B;decorin;Decorin

产品验证



实验步骤

访问官网浏览详情: [www.ablybio.cn](http://www.ablybio.cn)