

# CCDC61 Rabbit pAb

货号: B15351

产品信息

反应	Human,Mouse
宿主	Rabbit
克隆性	Polyclonal
预测反应	
应用	WB
推荐浓度	<b>WB:</b> 1:500 - 1:2000
理论分子量	37kDa/57kDa
实测分子量	57kDa
形式	Liquid
保存条件	Store at -20°C. Avoid freeze / thaw cycles. Buffer: PBS with 0.02% sodium azide,50% glycerol,pH7.3.
偶联物	Unconjugated
阳性对照	Jurkat
细胞定位	centriolar subdistal appendage,centrosome,ciliary basal body,cytoplasm,microtubule organizing center
纯化	Affinity purification

抗原信息

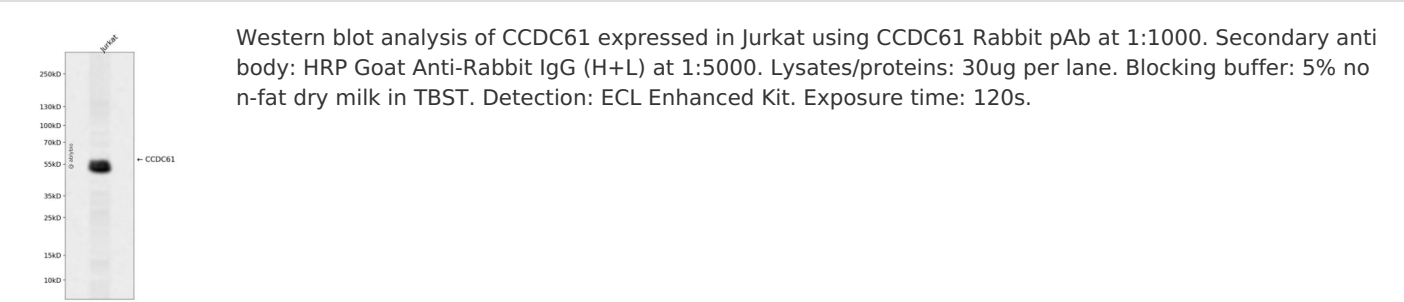
抗原信息	Recombinant fusion protein containing a sequence corresponding to amino acids 352-531 of human CCD C61 (NP_001073871.1).
序列	PSPSPTGGRALRFDPTAFVKAKERKQREIQMKQQQRNRLGSGGSGDGPVSWSRQTQPPAALTGRGDAPNRSRNRSSSVDSFRSRCSSASSCSDLEDFSESLRGGHRRRGKPPSPTPWSGSNMKSPPVERSHHQKSLANSGGWVPIKEYSSEHQAADMAEIDARLKALQEYMNRLDMRS

靶点信息

研究背景	Microtubule-binding centrosomal protein required for centriole cohesion, independently of the centrosome-associated protein/CEP250 and rootletin/CROCC linker. In interphase, required for anchoring microtubules at the mother centriole subdistal appendages and for centrosome positioning. During mitosis, may be involved in spindle assembly and chromatin alignment by regulating the organization of spindle microtubules into a symmetrical structure. Has been proposed to play a role in CEP170 recruitment to centrosomes. However, this function could not be confirmed. Plays a non-essential role in ciliogenesis.
------	---

基因ID	729440
基因名	CCDC61
Swiss	Q9Y6R9
别名	CCDC61

产品验证



实验步骤

访问官网浏览详情: [www.ablybio.cn](http://www.ablybio.cn)