

# GEM Rabbit pAb

货号: B15288

产品信息

反应	Human
宿主	Rabbit
克隆性	Polyclonal
预测反应	
应用	WB
推荐浓度	<b>WB:</b> 1:500 - 1:2000
理论分子量	33kDa
实测分子量	34kDa
形式	Liquid
保存条件	Store at -20°C. Avoid freeze / thaw cycles. Buffer: PBS with 0.02% sodium azide,50% glycerol,pH7.3.
偶联物	Unconjugated
阳性对照	HeLa,293T
细胞定位	Cell membrane,Cytoplasmic side,Peripheral membrane protein
纯化	Affinity purification

抗原信息

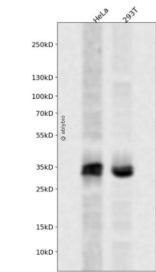
抗原信息	Recombinant fusion protein containing a sequence corresponding to amino acids 1-150 of human GEM (NP_005252.1).
序列	MTLNNVTMRQGTVGMQPQQQRWSIPADGRHLMVQKEPHQYSHRNRHSATPEDHCRRSWSSDSTDVISSES GNTYYRVVLIGE QGVGKSTLANIFAGVHDSMDSDCEVLGEDTYERTLMVDGESATIILLDMWENKGENEWLHDHCMQVG

靶点信息

研究背景	The protein encoded by this gene belongs to the RAD/GEM family of GTP-binding proteins. It is associated with the inner face of the plasma membrane and could play a role as a regulatory protein in receptor-mediated signal transduction. Alternative splicing occurs at this locus and two transcript variants encoding the same protein have been identified.
基因ID	2669

基因名	GEM
Swiss	P55040
别名	GEM;KIR

产品验证



Western blot analysis of GEM expressed in HeLa,293T using GEM Rabbit pAb at 1:1000. Secondary antibody: HRP Goat Anti-Rabbit IgG (H+L) at 1:5000. Lysates/proteins: 30ug per lane. Blocking buffer: 5% non-fat dry milk in TBST. Detection: ECL Enhanced Kit. Exposure time: 120s.

实验步骤

访问官网浏览详情: [www.ablybio.cn](http://www.ablybio.cn)