

# RAE1 Rabbit pAb

货号: B15247

产品信息

反应	Human,Mouse,Rat
宿主	Rabbit
克隆性	Polyclonal
预测反应	
应用	WB
推荐浓度	<b>WB:</b> 1:500 - 1:2000
理论分子量	40kDa
实测分子量	40kDa
形式	Liquid
保存条件	Store at -20°C. Avoid freeze / thaw cycles. Buffer: PBS with 0.02% sodium azide,50% glycerol,pH7.3.
偶联物	Unconjugated
阳性对照	Mouse brain,Mouse spleen,Mouse thymus,Rat brain
细胞定位	Cytoplasm,Nucleus
纯化	Affinity purification

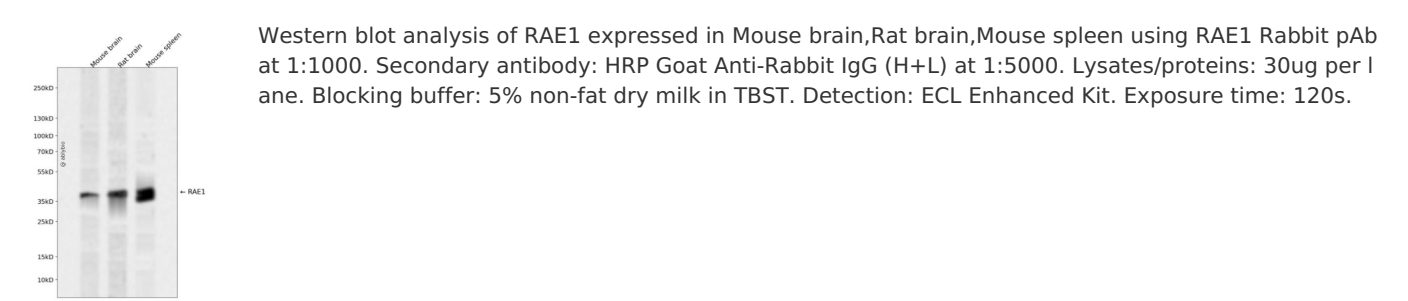
抗原信息

抗原信息	Recombinant fusion protein containing a sequence corresponding to amino acids 1-368 of human RAE1 ( NP_003601.1).
序列	MSLFGTTSGFGTSGTSMFGSATTDNHNPMKDIEVTSSPDDSIGCLSFSPPTLPGNFLIAGSWANDVRCWEVQDSGQTIPK AQQMHTGPVLDVCWSDDGSKVFTASCDKTAKMWDLSSNQAIQIAQHDAPVKTIHWIKAPNYSCVMTGSWDKTLKFWD TRSSNPMMVLQLPERCYCADVIYPMAVVATAERGLIVYQLENQPSEFRRIESPLKHQHRCVAIFKDKQNKPTGFALGSIEGR VAIHYNPPNPAKDNFTFKCHRSNGTNTSAPQDIYAVNGIAFHVPVHGTLATVGSDGRFSFWDKDARTKLKTSEQLDQPISA CCFNHNGNIFAYASSYDWSKGHEFYNPQKKNYIFLRNAAEELKPRNKK

靶点信息

研究背景	Mutations in the Schizosaccharomyces pombe Rae1 and Saccharomyces cerevisiae Gle2 genes have been shown to result in accumulation of poly(A)-containing mRNA in the nucleus, suggesting that the encoded proteins are involved in RNA export. The protein encoded by this gene is a homolog of yeast Rae1. It contains four WD40 motifs, and has been shown to localize to distinct foci in the nucleoplasm, to the nuclear rim, and to meshwork-like structures throughout the cytoplasm. This gene is thought to be involved in nucleocytoplasmic transport, and in directly or indirectly attaching cytoplasmic mRNPs to the cytoskeleton. Alternatively spliced transcript variants encoding the same protein have been found for this gene.
基因ID	8480
基因名	RAE1
Swiss	P78406
别名	RAE1;MIG14;MRNP41;Mnnp41;dj481f12.3;dj800j21.1

产品验证



实验步骤

访问官网浏览详情: [www.ablybio.cn](http://www.ablybio.cn)