

# Phospho-GSK3β-Y216 + GSK3α-Y279 Rabbit pAb

货号: B14900

产品信息

反应	Human
宿主	Rabbit
克隆性	Polyclonal
预测反应	<b>WB:</b> Panc-1
应用	<a href="#">WB</a>
推荐浓度	<b>WB:</b> 1:500 - 1:2000
理论分子量	46kDa/48kDa
实测分子量	50kDa
形式	Liquid
保存条件	Store at -20°C. Avoid freeze / thaw cycles. Buffer: PBS with 0.02% sodium azide,50% glycerol,pH7.3.
偶联物	Unconjugated
阳性对照	293
细胞定位	Cell membrane,Cytoplasm,Nucleus
纯化	Affinity purification

抗原信息

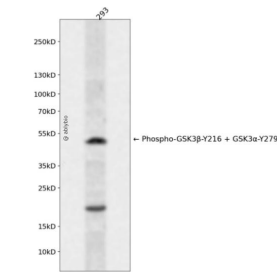
抗原信息	A synthetic phosphorylated peptide around Y216 of human GSK3β (NP_001139628).
序列	VSYIC

靶点信息

研究背景	The protein encoded by this gene is a serine-threonine kinase, belonging to the glycogen synthase kinase subfamily. It is involved in energy metabolism, neuronal cell development, and body pattern formation. P olymorphisms in this gene have been implicated in modifying risk of Parkinson disease, and studies in mi ce show that overexpression of this gene may be relevant to the pathogenesis of Alzheimer disease. Alter natively spliced transcript variants encoding different isoforms have been found for this gene.
基因ID	2931,2932

基因名	GSK3A,GSK3B
Swiss	P49841
别名	GSK3B;gsk-3β

产品验证



Western blot analysis of Phospho-GSK3β-Y216 + GSK3α-Y279 expressed in 293 using Phospho-GSK3β-Y216 + GSK3α-Y279 Rabbit pAb at 1:1000. Secondary antibody: HRP Goat Anti-Rabbit IgG (H+L) at 1:5000. Lysates/proteins: 30ug per lane. Blocking buffer: 5% non-fat dry milk in TBST. Detection: ECL Enhanced Kit. Exposure time: 120s.

实验步骤

访问官网浏览详情: [www.ablybio.cn](http://www.ablybio.cn)