

RANBP2 Rabbit pAb

货号: B14528

产品信息

反应	Mouse,Rat
宿主	Rabbit
克隆性	Polyclonal
预测反应	WB: Mus musculus
应用	WB IHC
推荐浓度	WB: 1:500 - 1:2000 IHC: 1:50 - 1:200
理论分子量	
实测分子量	450kD
形式	Liquid
保存条件	Store at -20°C. Avoid freeze / thaw cycles. Buffer: PBS with 0.01% thiomersal,50% glycerol,pH7.3.
偶联物	Unconjugated
阳性对照	
细胞定位	cytoplasm,cytosol,nuclear envelope,nuclear inclusion body,nuclear membrane,nuclear pore,nuclear pore cytoplasmic filaments,nuclear pore nuclear basket,nucleoplasm
纯化	Affinity purification

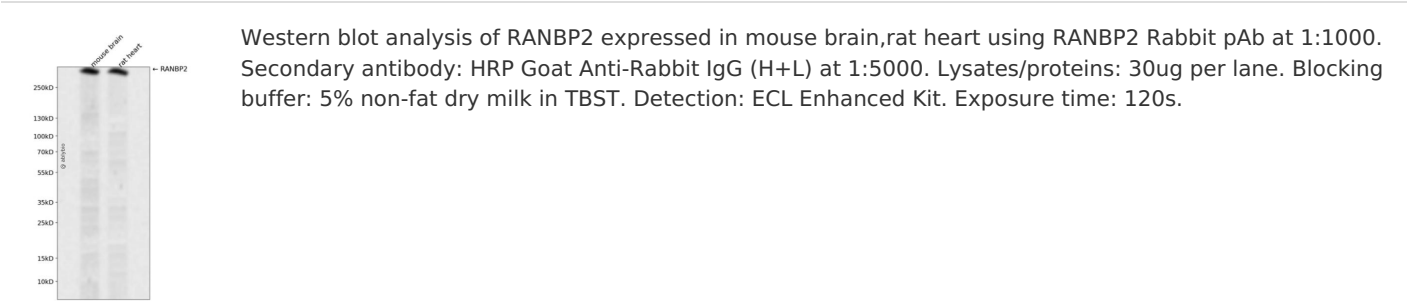
抗原信息

抗原信息	Recombinant fusion protein containing a sequence corresponding to amino acids 2900-3050 of human RANBP2 (NP_006258.3).
序列	SDEEVVHNEDIHFEPIVSLPEVEVKSGEEDDEILFKERAKLYRWDRDVSQWKERGVGDIKILWHTMKNYYRILMRRDQVFKVCANHVITKTMELKPLNVSNNALVWTASDYADGEAKVEQLAVRFKTKEVADCFKKTFEECQQNLMKLQKG

靶点信息

研究背景	RAN is a small GTP-binding protein of the RAS superfamily that is associated with the nuclear membrane and is thought to control a variety of cellular functions through its interactions with other proteins. This gene encodes a very large RAN-binding protein that immunolocalizes to the nuclear pore complex. The protein is a giant scaffold and mosaic cyclophilin-related nucleoporin implicated in the Ran-GTPase cycle. The encoded protein directly interacts with the E2 enzyme UBC9 and strongly enhances SUMO1 transfer from UBC9 to the SUMO1 target SP100. These findings place sumoylation at the cytoplasmic filaments of the nuclear pore complex and suggest that, for some substrates, modification and nuclear import are linked events. This gene is partially duplicated in a gene cluster that lies in a hot spot for recombination on chromosome 2q. [provided by RefSeq, Jul 2008]
基因ID	5903
基因名	RANBP2
Swiss	P49792
别名	ADANE; ANE1; IIAE3; NUP358; TRP1; TRP2

产品验证



实验步骤

访问官网浏览详情: www.ablybio.cn