

Phospho-INSR-Y1189/Y1190 + IGF1R-Y1165/Y1166 Rabbit pAb

货号: B14482

产品信息

| | |
|-------|--|
| 反应 | Human,Mouse,Rat |
| 宿主 | Rabbit |
| 克隆性 | Polyclonal |
| 预测反应 | WB: Mus musculus |
| 应用 | WB |
| 推荐浓度 | WB: 1:500 - 1:2000 |
| 理论分子量 | 154kDa/155kDa/156kDa |
| 实测分子量 | 100kDa |
| 形式 | Liquid |
| 保存条件 | Store at -20°C. Avoid freeze / thaw cycles. Buffer: PBS with 0.01% thiomersal,50% glycerol,pH7.3. |
| 偶联物 | Unconjugated |
| 阳性对照 | 293T |
| 细胞定位 | cytoplasm,nucleus,plasma membrane,T-tubule |
| 纯化 | Affinity purification |

抗原信息

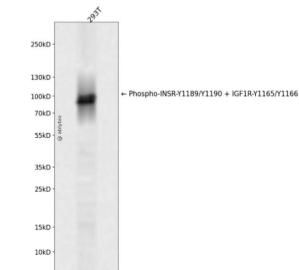
| | |
|------|---|
| 抗原信息 | A synthetic phosphorylated peptide around Y1165 & Y1166 of human IGF1RINSR (NP_000199.2). |
| 序列 | YETDYY |

靶点信息

| | |
|------|--|
| 研究背景 | This receptor binds insulin-like growth factor with a high affinity. It has tyrosine kinase activity. The insulin-like growth factor I receptor plays a critical role in transformation events. Cleavage of the precursor generates alpha and beta subunits. It is highly overexpressed in most malignant tissues where it functions as an anti-apoptotic agent by enhancing cell survival. Alternatively spliced transcript variants encoding distinct isoforms have been found for this gene. [provided by RefSeq, May 2014] |
| 基因ID | 3480,3643 |

| | |
|-------|---------------|
| 基因名 | IGF1R,INSR |
| Swiss | P08069,P06213 |
| 别名 | IGF1R/INSR |

产品验证



Western blot analysis of Phospho-INSR-Y1189/Y1190 + IGF1R-Y1165/Y1166 expressed in 293T using Phospho-INSR-Y1189/Y1190 + IGF1R-Y1165/Y1166 Rabbit pAb at 1:1000. Secondary anti body: HRP Goat Anti-Rabbit IgG (H+L) at 1:5000. Lysates/proteins: 30ug per lane. Blocking buff er: 5% non-fat dry milk in TBST. Detection: ECL Enhanced Kit. Exposure time: 120s.

实验步骤

访问官网浏览详情: www.ablybio.cn