

NAPB Rabbit pAb

货号: B14467

产品信息

反应	Human,Mouse,Rat
宿主	Rabbit
克隆性	Polyclonal
预测反应	WB: Homo sapiens,Mus musculus
应用	WB
推荐浓度	WB: 1:500 - 1:2000
理论分子量	33kDa
实测分子量	37kDa
形式	Liquid
保存条件	Store at -20°C. Avoid freeze / thaw cycles. Buffer: PBS with 0.01% thiomersal,50% glycerol,pH7.3.
偶联物	Unconjugated
阳性对照	Mouse brain,Mouse eye,Rat brain
细胞定位	Membrane,Peripheral membrane protein
纯化	Affinity purification

抗原信息

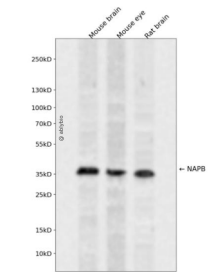
抗原信息	Recombinant fusion protein containing a sequence corresponding to amino acids 1-50 of human NAPB (N P_071363.1).
序列	MDNAGKEREAVQLMAEAEKRVKASHSFLRGLFGGNTRIEEACEMYTRAAN

靶点信息

研究背景	This gene encodes a member of the soluble N-ethyl-maleimide-sensitive fusion attachment protein (SNAP) family. SNAP proteins play a critical role in the docking and fusion of vesicles to target membranes as part of the 20S NSF-SNAP-SNARE complex. This gene encodes the SNAP beta isoform which has been shown to be preferentially expressed in brain tissue. The encoded protein also interacts with the GluR2 &945;-amino-3-hydroxy-5-methyl-4-isoxazolepropionate (AMPA) receptor subunit C-terminus and may play a role as a chaperone in the molecular processing of the AMPA receptor.
基因ID	63908

基因名	NAPB
Swiss	Q9H115
别名	NAPB;SNAP-BETA;SNAPB

产品验证



Western blot analysis of NAPB expressed in Mouse brain,Mouse eye,Rat brain using NAPB Rabbit pAb at 1:1000. Secondary antibody: HRP Goat Anti-Rabbit IgG (H+L) at 1:5000. Lysates/proteins: 30ug per lane. Blocking buffer: 5% non-fat dry milk in TBST. Detection: ECL Enhanced Kit. Exposure time: 120s.

实验步骤

访问官网浏览详情: www.ablybio.cn