

# RPL35 Rabbit pAb

货号: B14427

产品信息

反应	Human,Mouse,Rat
宿主	Rabbit
克隆性	Polyclonal
预测反应	<b>WB:</b> Homo sapiens
应用	<a href="#">WB</a> <a href="#">IHC</a> <a href="#">IF/ICC</a>
推荐浓度	<b>WB:</b> 1:500 - 1:2000 <b>IHC:</b> 1:50 - 1:200 <b>IF/ICC:</b> 1:50 - 1:200
理论分子量	14kDa
实测分子量	30kDa
形式	Liquid
保存条件	Store at -20°C. Avoid freeze / thaw cycles. Buffer: PBS with 0.01% thiomersal,50% glycerol,pH7.3.
偶联物	Unconjugated
阳性对照	HeLa,Jurkat,A-549
细胞定位	cytoplasm,cytosol,cytosolic ribosome,nucleolus
纯化	Affinity purification

抗原信息

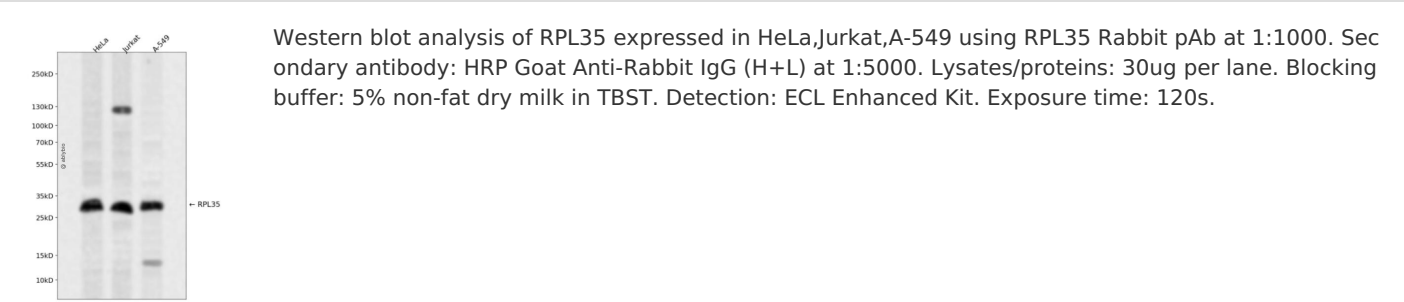
抗原信息	Recombinant fusion protein containing a sequence corresponding to amino acids 50-120 of human RPL35 (NP_009140.1).
序列	VRKSIARVLTVINQTQKENLRKFYKGKKYKPLDLRPKKTRAMRRRLNKHEENLTKKKQQRKERLYPLRKYA

靶点信息

研究背景	Ribosomes, the organelles that catalyze protein synthesis, consist of a small 40S subunit and a large 60S subunit. Together these subunits are composed of 4 RNA species and approximately 80 structurally distinct proteins. This gene encodes a ribosomal protein that is a component of the 60S subunit. The protein belongs to the L29P family of ribosomal proteins. It is located in the cytoplasm. As is typical for genes encoding ribosomal proteins, there are multiple processed pseudogenes of this gene dispersed through the genome. [provided by RefSeq, Jul 2008]
------	---

基因ID	11224
基因名	RPL35
Swiss	P42766
别名	L35;RPL35

产品验证



实验步骤

访问官网浏览详情: [www.ablybio.cn](http://www.ablybio.cn)