

PDE3A Rabbit pAb

货号: B14411

产品信息

反应	Human,Mouse,Rat
宿主	Rabbit
克隆性	Polyclonal
预测反应	WB: Homo sapiens
应用	WB IHC IF/ICC
推荐浓度	WB: 1:500 - 1:2000 IHC: 1:50 - 1:200 IF/ICC: 1:50 - 1:100
理论分子量	125kDa
实测分子量	125kDa
形式	Liquid
保存条件	Store at -20°C. Avoid freeze / thaw cycles. Buffer: PBS with 0.01% thiomersal,50% glycerol,pH7.3.
偶联物	Unconjugated
阳性对照	HepG2,mouse lung,mouse heart,mouse brain
细胞定位	cytosol
纯化	Affinity purification

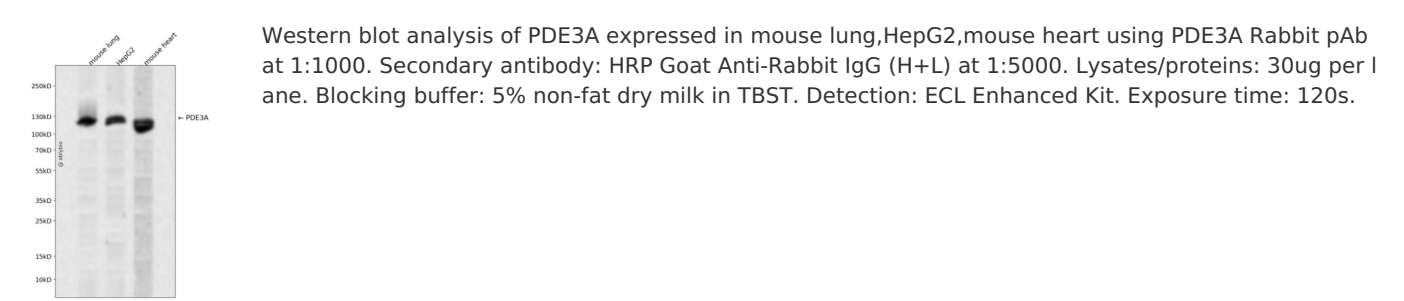
抗原信息

抗原信息	Recombinant fusion protein containing a sequence corresponding to amino acids 380-660 of human PDE3 A (NP_000912.3).
序列	LLSTQLTFQAIHKPRVNPVTSLSENYTCSDSEESSEKDKLAIPKRLRRSLPPGLLRRVSSTWTTTTSATGLPTLEPAPVRRDR STSIKLQEAPSSSPDSWNNPVMMTLTKSRSTSSYAISAANHVKAKKQSRPGALAKISPLSSPCSSPLQGTPASSLVSKISA VQFPESADTTAKQSLGSHRALTYTQSAPDLSPQILTPPVICSSCGRPYSQGNPADEPLERSGVATRTPSRTDDTAQVTS DYETNNNSDSSDIVQNEDETECLREPLRKASACSTYA

靶点信息

研究背景	This gene encodes a member of the cGMP-inhibited cyclic nucleotide phosphodiesterase (cGI-PDE) family. cGI-PDE enzymes hydrolyze both cAMP and cGMP, and play critical roles in many cellular processes by regulating the amplitude and duration of intracellular cyclic nucleotide signals. The encoded protein mediates platelet aggregation and also plays important roles in cardiovascular function by regulating vascular smooth muscle contraction and relaxation. Inhibitors of the encoded protein may be effective in treating congestive heart failure. Alternatively spliced transcript variants encoding multiple isoforms have been observed for this gene.
基因ID	5139
基因名	PDE3A
Swiss	Q14432
别名	HTNB;CGI-PDE;CGI-PDE A;CGI-PDE-A;PDE3A

产品验证



实验步骤

访问官网浏览详情: www.ablybio.cn