

APOBEC3D Rabbit pAb

货号: **B14168**

产品信息

反应	Human,Mouse,Rat
宿主	Rabbit
克隆性	Polyclonal
预测反应	WB: Homo sapiens
应用	WB
推荐浓度	WB: 1:500 - 1:2000
理论分子量	46kDa
实测分子量	43kDa
形式	Liquid
保存条件	Store at -20°C. Avoid freeze / thaw cycles. Buffer: PBS with 0.01% thiomersal,50% glycerol,pH7.3.
偶联物	Unconjugated
阳性对照	Raji,HepG2,293T,Mouse spleen,Mouse liver,Mouse kidney,Rat liver,Rat kidney
细胞定位	Cytoplasm,P-body
纯化	Affinity purification

抗原信息

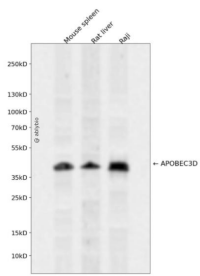
抗原信息	Recombinant fusion protein containing a sequence corresponding to amino acids 207-386 of human APOBEC3D (NP_689639.2).
序列	AMYPHIFYFHFNLLKACGRNESWLCFTMEVTKHHSVFRKRGVFRNQVDPETHCHAERCFLSWFCDDILSPNTNYEVTWYTSWSPCECAGEVAEFLARHSNVNLTIFTARLCYFWDTDYQEGLCSLSQEGASVKIMGYKDFVSCWKNFVYSDDEPFKPWKGLQTNFRLRKRRRLREILQ

靶点信息

研究背景	This gene is a member of the cytidine deaminase gene family. It is one of a group of related genes found in a cluster, thought to result from gene duplication, on chromosome 22. Members of the cluster encode proteins that are structurally and functionally related to the C to U RNA-editing cytidine deaminase APOBEC1 and inhibit retroviruses, such as HIV, by deaminating cytosine residues in nascent retroviral cDNA.
------	--

基因ID	140564
基因名	
Swiss	Q96AK3
别名	APOBEC3D;A3D;APOBEC3DE;APOBEC3E;ARP6

产品验证



Western blot analysis of APOBEC3D expressed in Mouse spleen, Rat liver, Raji using APOBEC3D Rabbit p Ab at 1:1000. Secondary antibody: HRP Goat Anti-Rabbit IgG (H+L) at 1:5000. Lysates/proteins: 30ug per lane. Blocking buffer: 5% non-fat dry milk in TBST. Detection: ECL Enhanced Kit. Exposure time: 1 20s.

实验步骤

访问官网浏览详情: www.ablybio.cn