

# RPS24 Rabbit pAb

货号: B14127

## 产品信息

反应	Human,Mouse,Rat
宿主	Rabbit
克隆性	Polyclonal
预测反应	<b>IHC:</b> Homo sapiens
应用	<a href="#">WB</a> <a href="#">IHC</a> <a href="#">IP</a>
推荐浓度	<b>WB:</b> 1:500 - 1:2000 <b>IHC:</b> 1:50 - 1:200 <b>IP:</b> 1:50 - 1:100
理论分子量	15kDa/32kDa
实测分子量	19kDa
形式	Liquid
保存条件	Store at -20°C. Avoid freeze / thaw cycles. Buffer: PBS with 0.01% thiomersal,50% glycerol,pH7.3.
偶联物	Unconjugated
阳性对照	U-87MG,293T,HeLa,Jurkat,Mouse liver,Mouse pancreas,Rat liver
细胞定位	cytoplasm,cytosol,cytosolic ribosome,endoplasmic reticulum,nucleoplasm,nucleus
纯化	Affinity purification

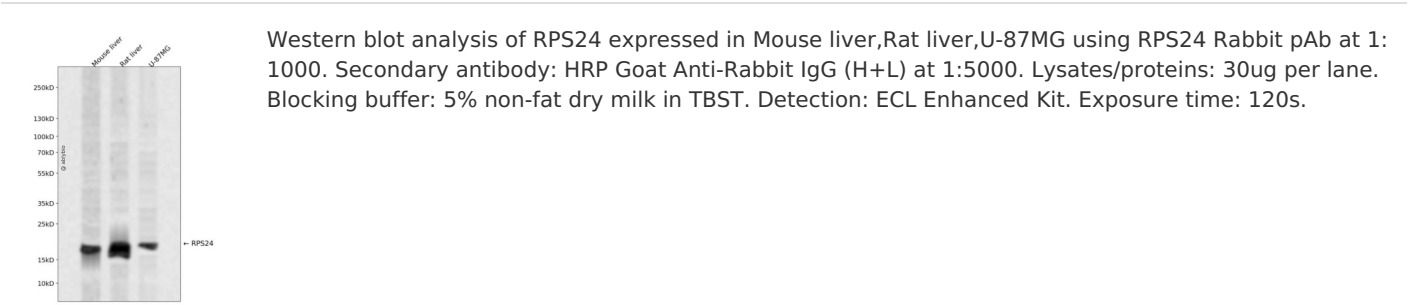
## 抗原信息

抗原信息	Recombinant fusion protein containing a sequence corresponding to amino acids 1-130 of human RPS24 (NP_148982.1).
序列	MNDTVTIRTRKFMNRLLRKQMVLDVLPKGKATVPKTEIREKLAKMYKTPDVIFVFGFRTHFGGGKTTGFGMIYDSL DYAKKNPEKHRLARHGLYEKKKTSRKQRKERKNRMKKVRGTAKANVGAGKK

## 靶点信息

研究背景	Ribosomes, the organelles that catalyze protein synthesis, consist of a small 40S subunit and a large 60S subunit. Together these subunits are composed of 4 RNA species and approximately 80 structurally distinct proteins. This gene encodes a ribosomal protein that is a component of the 40S subunit. The protein belongs to the S24E family of ribosomal proteins. It is located in the cytoplasm. Multiple transcript variants encoding different isoforms have been found for this gene. As is typical for genes encoding ribosomal proteins, there are multiple processed pseudogenes of this gene dispersed through the genome. Mutations in this gene result in Diamond-Blackfan anemia.
基因ID	6229
基因名	RPS24
Swiss	P62847
别名	RPS24;DBA3;S24

产品验证



实验步骤

访问官网浏览详情: [www.ablybio.cn](http://www.ablybio.cn)