

# Semaphorin 3A Rabbit pAb

货号: B14071

产品信息

反应	Mouse,Rat
宿主	Rabbit
克隆性	Polyclonal
预测反应	<b>WB:</b> Mus musculus
应用	<a href="#">WB</a>
推荐浓度	<b>WB:</b> 1:500 - 1:1000
理论分子量	88kDa
实测分子量	89kDa
形式	Liquid
保存条件	Store at -20°C. Avoid freeze / thaw cycles. Buffer: PBS with 0.01% thiomersal,50% glycerol,pH7.3.
偶联物	Unconjugated
阳性对照	Mouse brain
细胞定位	Secreted
纯化	Affinity purification

抗原信息

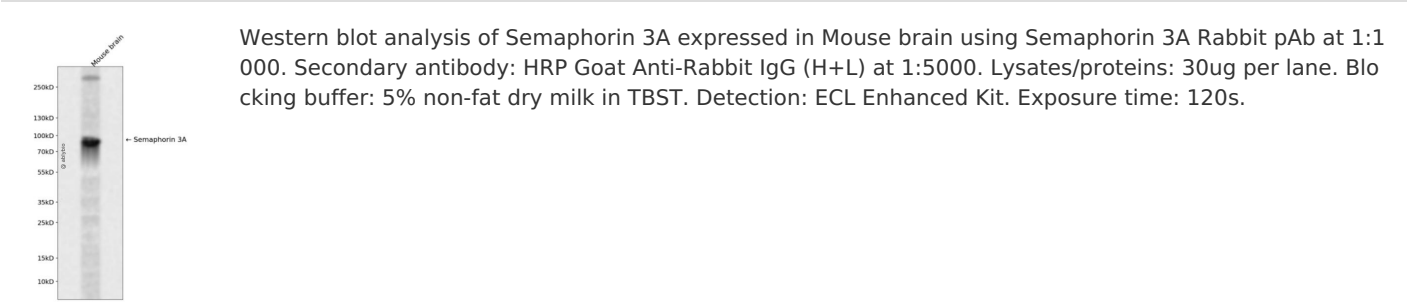
抗原信息	A synthetic peptide corresponding to a sequence within amino acids 300-400 of human Semaphorin 3A ( NP_006071.1).
序列	GIDTHFDELQDVFLMNFKDPKNPVVYGVFTTSSNIFKGSAVCMYSMSDVRRVFLGPYAHRDGPNYQWVPYQGRVPYPRP GTCPSKTFGGFDSTKDLPDDVI

靶点信息

研究背景	This gene is a member of the semaphorin family and encodes a protein with an Ig-like C2-type (immunoglobulin-like) domain, a PSI domain and a Sema domain. This secreted protein can function as either a chemorepulsive agent, inhibiting axonal outgrowth, or as a chemoattractive agent, stimulating the growth of apical dendrites. In both cases, the protein is vital for normal neuronal pattern development. Increased expression of this protein is associated with schizophrenia and is seen in a variety of human tumor cell lines. Also, aberrant release of this protein is associated with the progression of Alzheimer's disease.
------	--

基因ID	10371
基因名	SEMA3A
Swiss	Q14563
别名	SEMA3A;COLL1;HH16;Hsema-I;Hsema-III;SEMA1;SEMAD;SEMAIII;SEMAL;SemD;coll-1

产品验证



实验步骤

访问官网浏览详情: [www.ablybio.cn](http://www.ablybio.cn)