

WNT2 Rabbit pAb

货号: B14022

产品信息

反应	Human,Mouse,Rat
宿主	Rabbit
克隆性	Polyclonal
预测反应	WB: Crataegus
应用	WB IF/ICC
推荐浓度	WB: 1:500 - 1:2000 IF/ICC: 1:50 - 1:200
理论分子量	40kDa
实测分子量	50kDa
形式	Liquid
保存条件	Store at -20°C. Avoid freeze / thaw cycles. Buffer: PBS with 0.02% sodium azide,50% glycerol,pH7.3.
偶联物	Unconjugated
阳性对照	Mouse liver,Rat liver
细胞定位	Secreted,extracellular matrix,extracellular space
纯化	Affinity purification

抗原信息

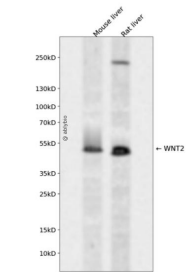
抗原信息	A synthetic peptide corresponding to a sequence within amino acids 1-100 of human WNT2 (NP_003382.1).
序列	MNAPLGGIWLWLPLLLTWLTPEVNSSWWYMRATGGSSRVMCDNVPGLVSSQRQLCHRHPDVMRAISQGVAEWTAECQHQRQHRWNCNTLDRDHSLFGRV

靶点信息

研究背景	This gene is a member of the WNT gene family. The WNT gene family consists of structurally related genes which encode secreted signaling proteins. These proteins have been implicated in oncogenesis and in several developmental processes, including regulation of cell fate and patterning during embryogenesis. Alternatively spliced transcript variants have been identified for this gene.
基因ID	7472

基因名	WNT2
Swiss	P09544
别名	WNT2;INT1L1;IRP

产品验证



Western blot analysis of WNT2 expressed in Mouse liver,Rat liver using WNT2 Rabbit pAb at 1:1000. Secondary antibody: HRP Goat Anti-Rabbit IgG (H+L) at 1:5000. Lysates/proteins: 30ug per lane. Blocking buffer: 5% non-fat dry milk in TBST. Detection: ECL Enhanced Kit. Exposure time: 120s.

实验步骤

访问官网浏览详情: www.ablybio.cn