

HLA-A Rabbit pAb

货号: B13713

产品信息

反应	Human
宿主	Rabbit
克隆性	Polyclonal
预测反应	FC: Mus musculus
应用	WB IHC
推荐浓度	WB: 1:500 - 1:1000 IHC: 1:50 - 1:20
理论分子量	40kDa
实测分子量	45KDa
形式	Liquid
保存条件	Store at -20°C. Avoid freeze / thaw cycles. Buffer: PBS with 0.05% proclin300,50% glycerol,pH7.3.
偶联物	Unconjugated
阳性对照	HepG2,A-431
细胞定位	Membrane,Single-pass type I membrane protein
纯化	Affinity purification

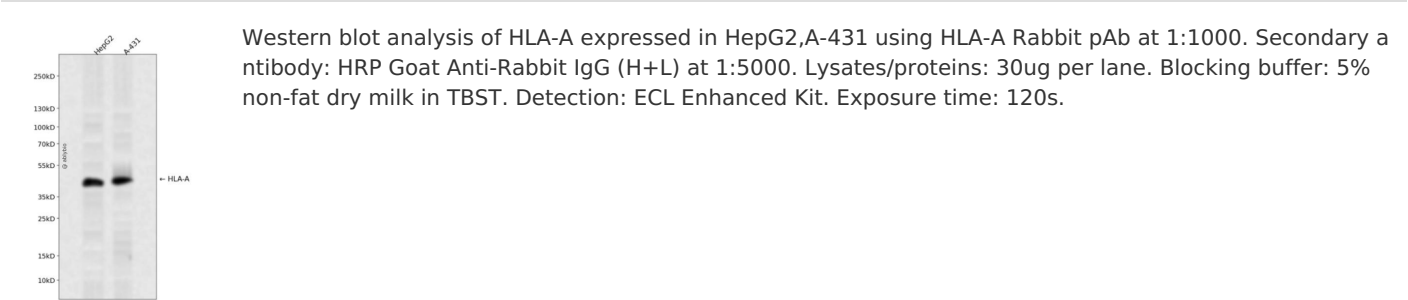
抗原信息

抗原信息	A synthetic peptide corresponding to a sequence within amino acids 50-150 of human HLA-A (NP_002107.3).
序列	GYVDDTQFVRFDSDAASQRMEPRAPWIEGEGPEYWDQETRNVKAQSQTDRVDLGLRGYYNQSEAGSHTIQIMYGCD VGSDGRFLRGYRQDAYDGKDYIAL

靶点信息

研究背景	HLA-A belongs to the HLA class I heavy chain paralogues. This class I molecule is a heterodimer consisting of a heavy chain and a light chain (beta-2 microglobulin). The heavy chain is anchored in the membrane. Class I molecules play a central role in the immune system by presenting peptides derived from the endoplasmic reticulum lumen. They are expressed in nearly all cells. The heavy chain is approximately 45 kDa and its gene contains 8 exons. Exon 1 encodes the leader peptide, exons 2 and 3 encode the alpha1 and alpha2 domains, which both bind the peptide, exon 4 encodes the alpha3 domain, exon 5 encodes the transmembrane region, and exons 6 and 7 encode the cytoplasmic tail. Polymorphisms within exon 2 and exon 3 are responsible for the peptide binding specificity of each class one molecule. Typing for these polymorphisms is routinely done for bone marrow and kidney transplantation. Hundreds of HLA-A alleles have been described.
基因ID	3105
基因名	HLA-A
Swiss	P04439,P30443
别名	HLAA;HLA-A

产品验证



实验步骤

访问官网浏览详情: www.ablybio.cn