

# SUMO2/3 Rabbit pAb

货号: B13678

产品信息

反应	Human,Mouse,Rat
宿主	Rabbit
克隆性	Polyclonal
预测反应	<b>WB:</b> Homo sapiens
应用	<a href="#">WB</a>
推荐浓度	<b>WB:</b> 1:100 - 1:500
理论分子量	8kDa/10kDa
实测分子量	11-20KDa
形式	Liquid
保存条件	Store at -20°C. Avoid freeze / thaw cycles. Buffer: PBS with 0.05% proclin300,50% glycerol,pH7.3.
偶联物	Unconjugated
阳性对照	SH-SY5Y,293T,NIH/3T3,PC-12
细胞定位	Nucleus,PML body
纯化	Affinity purification

抗原信息

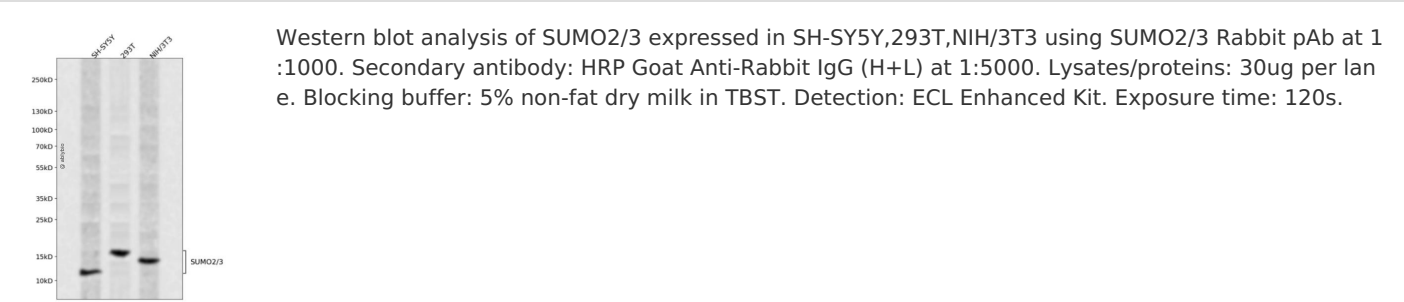
抗原信息	Recombinant fusion protein containing a sequence corresponding to amino acids 1-95 of human SUMO2/3 (NP_008868.3).
序列	MADEKPKEGVKTENNDHINLKVAGQDGSVVQFKIKRHTPLSKLMKAYCERQGLSMRQIRFRFDGQPINETDTPAQLEME DEDTIDVFQQQTGGVY

靶点信息

研究背景	This gene encodes a protein that is a member of the SUMO (small ubiquitin-like modifier) protein family. I t functions in a manner similar to ubiquitin in that it is bound to target proteins as part of a post-translati onal modification system. However, unlike ubiquitin which targets proteins for degradation, this protein is involved in a variety of cellular processes, such as nuclear transport, transcriptional regulation, apoptosis, and protein stability. It is not active until the last two amino acids of the carboxy-terminus have been clea ved off. Numerous pseudogenes have been reported for this gene. Alternate transcriptional splice variant s, encoding different isoforms, have been characterized.
------	---

基因ID	6613
基因名	SUMO2
Swiss	P61956
别名	SUMO2;HSMT3;SMT3B;SMT3H2;SUMO3;Smt3A

产品验证



实验步骤

访问官网浏览详情: [www.ablybio.cn](http://www.ablybio.cn)