

# KISS1R Rabbit pAb

货号: B13654

## 产品信息

反应	Human,Mouse,Rat
宿主	Rabbit
克隆性	Polyclonal
预测反应	<b>WB:</b> Rattus norvegicus
应用	<a href="#">WB</a> <a href="#">IHC</a>
推荐浓度	<b>WB:</b> 1:500 - 1:1000 <b>IHC:</b> 1:50 - 1:100
理论分子量	42kDa
实测分子量	42-70KDa
形式	Liquid
保存条件	Store at -20°C. Avoid freeze / thaw cycles. Buffer: PBS with 0.01% thiomersal,50% glycerol,pH7.3.
偶联物	Unconjugated
阳性对照	HeLa,BxPC-3,SH-SY5Y,Mouse lung,Mouse brain, Rat ovary,Rat brain,Rat kidney
细胞定位	Cell membrane,Multi-pass membrane protein
纯化	Affinity purification

## 抗原信息

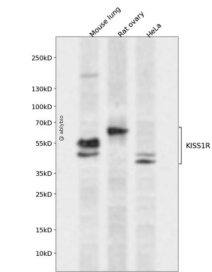
抗原信息	Recombinant fusion protein containing a sequence corresponding to amino acids 358-399 of human KISS 1R (NP_115940.2).
序列	APHAELLRLGSHPPARAQKPGSSGLAARGLCVLGEDNAPL

## 靶点信息

研究背景	The protein encoded by this gene is a galanin-like G protein-coupled receptor that binds metastatin, a peptide encoded by the metastasis suppressor gene KISS1. The tissue distribution of the expressed gene suggests that it is involved in the regulation of endocrine function, and this is supported by the finding that this gene appears to play a role in the onset of puberty. Mutations in this gene have been associated with hypogonadotropic hypogonadism and central precocious puberty.
基因ID	84634

基因名	KISS1R
Swiss	Q969F8
别名	KISS1R;AXOR12;CPPB1;GPR54;HH8;HOT7T175;KISS-1R

产品验证



Western blot analysis of KISS1R expressed in Mouse lung,Rat ovary,HeLa using KISS1R Rabbit pAb at 1: 1000. Secondary antibody: HRP Goat Anti-Rabbit IgG (H+L) at 1:5000. Lysates/proteins: 30ug per lane. Blocking buffer: 5% non-fat dry milk in TBST. Detection: ECL Enhanced Kit. Exposure time: 120s.

实验步骤

访问官网浏览详情: [www.ablybio.cn](http://www.ablybio.cn)