

# S100A12 Rabbit pAb

货号: **B13561**

产品信息

|       |  |
|-------|--|
| 反应    | Human,Mouse,Rat  |
| 宿主    | Rabbit   |
| 克隆性   | Polyclonal   |
| 预测反应  | <b>WB:</b> Homo sapiens  |
| 应用    | <a href="#">WB</a> <a href="#">IHC</a> <a href="#">IF/ICC</a>  |
| 推荐浓度  | <b>WB:</b> 1:500 - 1:1000<br><b>IHC:</b> 1:100 - 1:500<br><b>IF/ICC:</b> 1:50 - 1:200                  |
| 理论分子量 | 10kDa  |
| 实测分子量 | 11KDa  |
| 形式    | Liquid   |
| 保存条件  | Store at -20°C. Avoid freeze / thaw cycles.<br>Buffer: PBS with 0.02% sodium azide,50% glycerol,pH7.3. |
| 偶联物   | Unconjugated   |
| 阳性对照  | 293F   |
| 细胞定位  | Cell membrane,Cytoplasm,Peripheral membrane protein,Secreted,cytoskeleton                              |
| 纯化    | Affinity purification  |

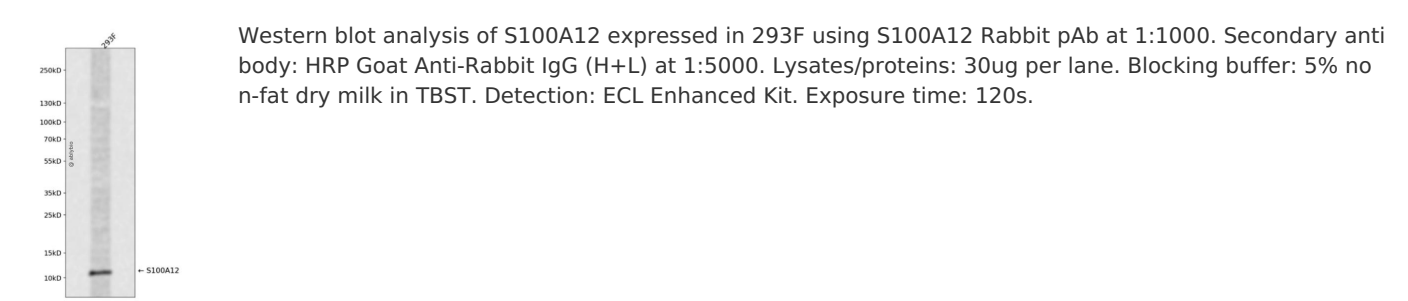
抗原信息

|      |  |
|------|--|
| 抗原信息 | Recombinant fusion protein containing a sequence corresponding to amino acids 1-92 of human S100A12 (NP_005612.1). |
| 序列   | MTKLEEHLEGIVNIFHQYSVRKGHFDTL SKGELKQLLTKE LANTIKNIKDKAVIDE IFQGLDANQDEQVDFQEFISLV AIALKA<br>AHYHTHKE               |

靶点信息

|       |   |
|-------|---|
| 研究背景  | The protein encoded by this gene is a member of the S100 family of proteins containing 2 EF-hand calcium-binding motifs. S100 proteins are localized in the cytoplasm and/or nucleus of a wide range of cells, and involved in the regulation of a number of cellular processes such as cell cycle progression and differentiation. S100 genes include at least 13 members which are located as a cluster on chromosome 1q21. This protein is proposed to be involved in specific calcium-dependent signal transduction pathways and its regulatory effect on cytoskeletal components may modulate various neutrophil activities. The protein includes an antimicrobial peptide which has antibacterial activity. |
| 基因ID  | 6283  |
| 基因名   | S100A12   |
| Swiss | P80511  |
| 别名    | S100A12;CAAF1;CAGC;CGRP;ENRAGE;MRP-6;MRP6;p6  |

产品验证



实验步骤

访问官网浏览详情: [www.ablybio.cn](http://www.ablybio.cn)