

# HAX1 Rabbit pAb

货号: **B13529**

## 产品信息

反应	Human,Mouse,Rat
宿主	Rabbit
克隆性	Polyclonal
预测反应	<b>WB:</b> Mus musculus,Homo sapiens <b>IHC:</b> Mus musculus,Homo sapiens
应用	<a href="#">WB</a> <a href="#">IF/ICC</a>
推荐浓度	<b>WB:</b> 1:500 - 1:2000 <b>IF/ICC:</b> 1:10 - 1:100
理论分子量	14kDa/21kDa/26kDa/28kDa/31kDa/32kDa
实测分子量	36kDa
形式	Liquid
保存条件	Store at -20°C. Avoid freeze / thaw cycles. Buffer: PBS with 0.02% sodium azide,50% glycerol,pH7.3.
偶联物	Unconjugated
阳性对照	K-562,MCF7,NCI-H460,SH-SY5Y,HepG2,293T,Mouse kidney,Mouse brain,Rat testis
细胞定位	Cytoplasmic vesicle,Endoplasmic reticulum,Mitochondrion,Nucleus membrane,Sarcoplasmic reticulum
纯化	Affinity purification

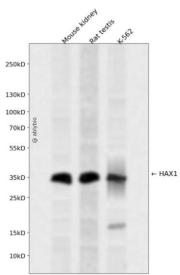
## 抗原信息

抗原信息	Recombinant fusion protein containing a sequence corresponding to amino acids 1-279 of human HAX1 (NP_006109.2).
序列	MSLFDLFRGFFGFGPGRSHRDPFFGGMTRDEDDDEEEEEEGGSWGRGNPRFHSPQHPPEEFGFGFSFSPGGGIRFHDNFGFDDLVRDFNSIFSMDMGAWTLPSHPPELPGPESETPGERLREGQTLRDSMLKYPDSHQPRIFGGVLESDARSESQPAPDWGSQRPFHRRFDDVWPMDPHPRTRREDNDLDSQVSQEGLGPVLQPQPKSYFKSISVTKITKPDGIVEERRTVVDSEGRTETTVTRHEADSSPRGDPEsprppalDDAFSILDLFGRWFRSR

## 靶点信息

研究背景	The protein encoded by this gene is known to associate with hematopoietic cell-specific Lyn substrate 1, a substrate of Src family tyrosine kinases. It also interacts with the product of the polycystic kidney disease 2 gene, mutations in which are associated with autosomal-dominant polycystic kidney disease, and with the F-actin-binding protein, cortactin. It was earlier thought that this gene product is mainly localized in the mitochondria, however, recent studies indicate it to be localized in the cell body. Mutations in this gene result in autosomal recessive severe congenital neutropenia, also known as Kostmann disease. Two transcript variants encoding different isoforms have been found for this gene.
基因ID	10456
基因名	HAX1
Swiss	O00165
别名	HAX1;HCLSBP1;HS1BP1;SCN3

## 产品验证



Western blot analysis of HAX1 expressed in Mouse kidney,Rat testis,K-562 using HAX1 Rabbit pAb at 1:1000. Secondary antibody: HRP Goat Anti-Rabbit IgG (H+L) at 1:5000. Lysates/proteins: 30ug per lane. Blocking buffer: 5% non-fat dry milk in TBST. Detection: ECL Enhanced Kit. Exposure time: 120s.

## 实验步骤

访问官网浏览详情: [www.ablybio.cn](http://www.ablybio.cn)