

PPP2R3B Rabbit pAb

货号: B13222

产品信息

反应	Human,Mouse
宿主	Rabbit
克隆性	Polyclonal
预测反应	WB: Homo sapiens
应用	WB
推荐浓度	WB: 1:500 - 1:2000
理论分子量	20kDa/65kDa
实测分子量	80kDa
形式	Liquid
保存条件	Store at -20°C. Avoid freeze / thaw cycles. Buffer: PBS with 0.02% sodium azide,50% glycerol,pH7.3.
偶联物	Unconjugated
阳性对照	HeLa,SW620,BT-474,SKOV3,mouse skeletal muscle
细胞定位	Nucleus
纯化	Affinity purification

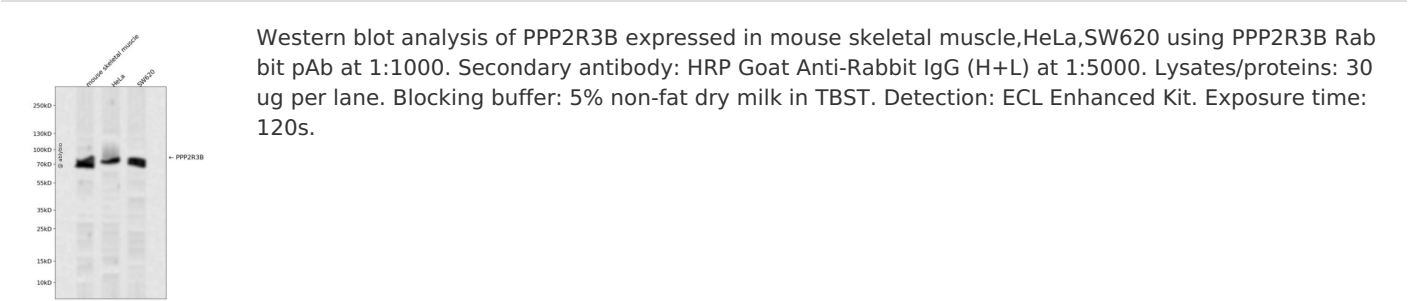
抗原信息

抗原信息	Recombinant fusion protein containing a sequence corresponding to amino acids 356-575 of human PPP2R3B (NP_037371.2).
序列	FSGAVTRGRKVKQKEGKISYADFVWFLISEEDKKTPTSIEYWFRCMDLDGDGALSMFELEYFYEEQCRRLD SMAIEALPFQD CLCQMLDLVKPRTEGKITLQDLKRCKLANVFFDTFFNIEKYLDHEQKEQISLLRDGDSGGPELSDWEKYAAEEYDILVAEET AGEPWEDGF EAELSPVEQKLSALRSPLAQRPF FEAPSPLGAVDLYEYACGDEDELEPL

靶点信息

研究背景	Protein phosphatase 2 (formerly named type 2A) is one of the four major Ser/Thr phosphatases and is implicated in the negative control of cell growth and division. Protein phosphatase 2 holoenzymes are heterotrimeric proteins composed of a structural subunit A, a catalytic subunit C, and a regulatory subunit B. The regulatory subunit is encoded by a diverse set of genes that have been grouped into the B/PR55, B'/PR61, and B''/PR72 families. These different regulatory subunits confer distinct enzymatic specificities and intracellular localizations to the holoenzyme. The product of this gene belongs to the B'' family. The B'' family has been further divided into subfamilies. The product of this gene belongs to the beta subfamily of regulatory subunit B''.
基因ID	28227
基因名	PPP2R3B
Swiss	Q9Y5P8
别名	PPP2R3B;NYREN8;PPP2R3L;PPP2R3LY;PR48;PR70

产品验证



实验步骤

访问官网浏览详情: www.ablybio.cn