

NUP133 Rabbit pAb

货号: B13205

产品信息

反应	Human
宿主	Rabbit
克隆性	Polyclonal
预测反应	WB: Homo sapiens
应用	WB IF/ICC
推荐浓度	WB: 1:1000 - 1:2000 IF/ICC: 1:50 - 1:200
理论分子量	128kDa
实测分子量	133kDa
形式	Liquid
保存条件	Store at -20°C. Avoid freeze / thaw cycles. Buffer: PBS with 0.02% sodium azide,50% glycerol,pH7.3.
偶联物	Unconjugated
阳性对照	A375,LO2,HeLa,NCI-H460
细胞定位	Chromosome,Nucleus,centromere,kinetochore,nuclear pore complex
纯化	Affinity purification

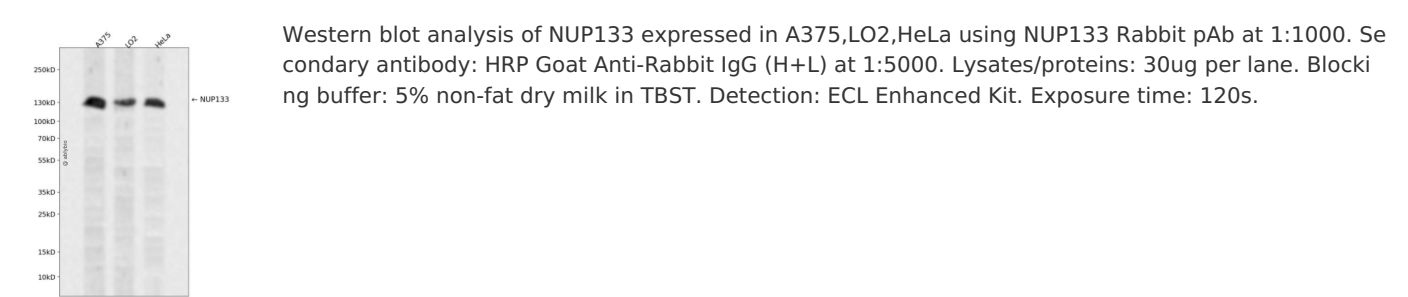
抗原信息

抗原信息	Recombinant fusion protein containing a sequence corresponding to amino acids 730-930 of human NUP 133 (NP_060700.2).
序列	NILKDMLQAASHYRQNRNSLYRREESLEKEPEYVPWTATSGPGGIRTVIIRQHEIVLKVAYPQADSNLRNIVTEQLVALIDCFL DGYVSQLKSVDKSSNRERYDNLEMEYLQKRSDLLSPLSLGQYLWAASLAEKYCDFDILVQMCEQTDNQSRLQRYMTQF ADQNFSDFLFRWYLEKGKRGKLLSQPISQHGQLANFLQ

靶点信息

研究背景	The nuclear envelope creates distinct nuclear and cytoplasmic compartments in eukaryotic cells. It consists of two concentric membranes perforated by nuclear pores, large protein complexes that form aqueous channels to regulate the flow of macromolecules between the nucleus and the cytoplasm. These complexes are composed of at least 100 different polypeptide subunits, many of which belong to the nucleoporin family. The nucleoporin protein encoded by this gene displays evolutionarily conserved interactions with other nucleoporins. This protein, which localizes to both sides of the nuclear pore complex at interphase, remains associated with the complex during mitosis and is targeted at early stages to the reforming nuclear envelope. This protein also localizes to kinetochores of mitotic cells.
基因ID	55746
基因名	NUP133
Swiss	Q8WUM0
别名	NUP133;hNUP133

产品验证



实验步骤

访问官网浏览详情: www.ablybio.cn