

GIPR Rabbit pAb

货号: B13184

产品信息

反应	Human,Mouse,Rat
宿主	Rabbit
克隆性	Polyclonal
预测反应	WB: Homo sapiens
应用	WB IHC
推荐浓度	WB: 1:500 - 1:2000 IHC: 1:50 - 1:200
理论分子量	48kDa/49kDa/53kDa
实测分子量	45kDa
形式	Liquid
保存条件	Store at -20°C. Avoid freeze / thaw cycles. Buffer: PBS with 0.02% sodium azide,50% glycerol,pH7.3.
偶联物	Unconjugated
阳性对照	K-562,Mouse liver,Rat heart,Rat brain
细胞定位	Cell membrane,Multi-pass membrane protein
纯化	Affinity purification

抗原信息

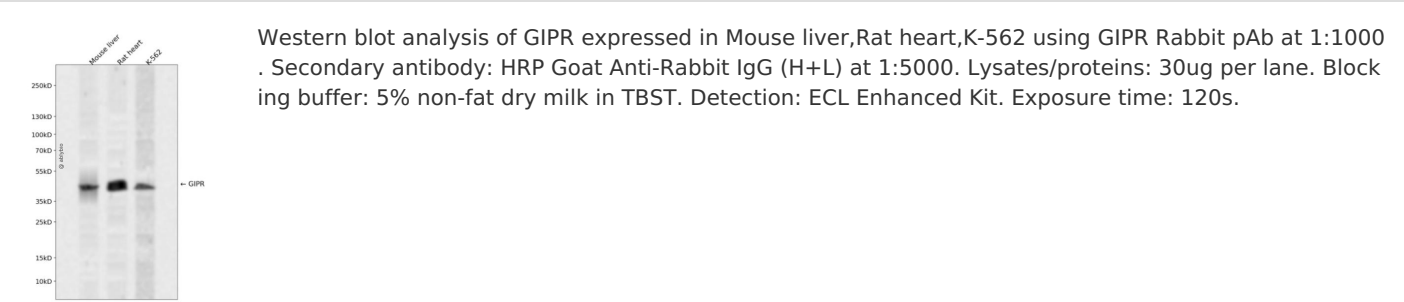
抗原信息	Recombinant fusion protein containing a sequence corresponding to amino acids 22-138 of human GIPR (NP_000155.1).
序列	RAETGSKGQTAGELYQRWERYRRECQETLAAAEPPSGLACNGSFDMYVCWDYAAPNATARASCPWYLPWHHHVAAGFVLRQCGSDGQWGLWRDHTQCENPEKNEAFLDQRLILERLQ

靶点信息

研究背景	This gene encodes a G-protein coupled receptor for gastric inhibitory polypeptide (GIP), which was originally identified as an activity in gut extracts that inhibited gastric acid secretion and gastrin release, but subsequently was demonstrated to stimulate insulin release in the presence of elevated glucose. Mice lacking this gene exhibit higher blood glucose levels with impaired initial insulin response after oral glucose load. Defect in this gene thus may contribute to the pathogenesis of diabetes.
------	--

基因ID	2696
基因名	GIPR
Swiss	P48546
别名	GIPR;PGQTL2

产品验证



实验步骤

访问官网浏览详情: www.ablybio.cn