

RPL30 Rabbit pAb

货号: B13120

产品信息

反应	Human,Mouse,Rat
宿主	Rabbit
克隆性	Polyclonal
预测反应	WB: Homo sapiens
应用	WB IHC IF/ICC
推荐浓度	WB: 1:500 - 1:2000 IHC: 1:50 - 1:100 IF/ICC: 1:50 - 1:100
理论分子量	12kDa
实测分子量	13kDa
形式	Liquid
保存条件	Store at -20°C. Avoid freeze / thaw cycles. Buffer: PBS with 0.01% thiomersal,50% glycerol,pH7.3.
偶联物	Unconjugated
阳性对照	HeLa,MCF7,HepG2,A-549,Mouse brain,Mouse heart,Mouse kidney,Rat liver
细胞定位	cytoplasm,cytosol,cytosolic ribosome,extracellular exosome,nucleus,postsynaptic density
纯化	Affinity purification

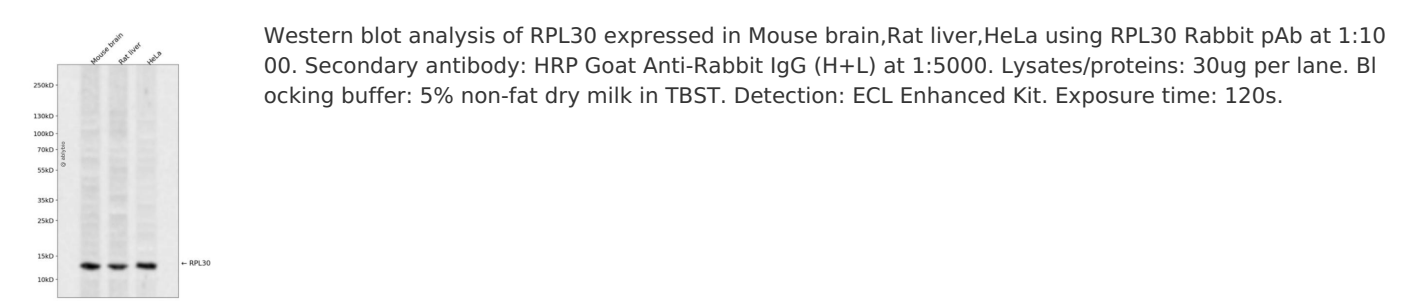
抗原信息

抗原信息	Recombinant fusion protein containing a sequence corresponding to amino acids 1-115 of human RPL30 (NP_000980.1).
序列	MVAAKKTKKSLESINSRLQLVMKSGKYVLGYKQTLKMIRQGKAKLVILANNCPALRKSEIEYYAMLAKTGVHHYSGNNIELG TACGKYRVCTLAIIDPGDSDIIRSMPEQTGEK

靶点信息

研究背景	Ribosomes, the organelles that catalyze protein synthesis, consist of a small 40S subunit and a large 60S subunit. Together these subunits are composed of 4 RNA species and approximately 80 structurally distinct proteins. This gene encodes a ribosomal protein that is a component of the 60S subunit. The protein belongs to the L30E family of ribosomal proteins. It is located in the cytoplasm. This gene is co-transcribed with the U72 small nucleolar RNA gene, which is located in its fourth intron. As is typical for genes encoding ribosomal proteins, there are multiple processed pseudogenes of this gene dispersed through the genome.
基因ID	6156
基因名	RPL30
Swiss	P62888
别名	RPL30;L30

产品验证



实验步骤

访问官网浏览详情: www.ablybio.cn