

Phospho-SRC Family-Y416 Rabbit pAb

货号: B12997

产品信息

反应	Human,Mouse,Rat
宿主	Rabbit
克隆性	Polyclonal
预测反应	WB: Homo sapiens
应用	WB
推荐浓度	WB: 1:500 - 1:2000
理论分子量	59kDa/60kDa
实测分子量	60kDa
形式	Liquid
保存条件	Store at -20°C. Avoid freeze / thaw cycles. Buffer: PBS with 0.02% sodium azide,50% glycerol,pH7.3.
偶联物	Unconjugated
阳性对照	NIH/3T3
细胞定位	Cell membrane,Cytoplasm,Mitochondrion inner membrane,Nucleus,cytoskeleton
纯化	Affinity purification

抗原信息

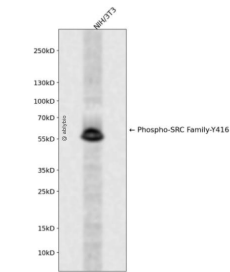
抗原信息	A synthetic phosphorylated peptide around Y416 of human SRC Family (NP_005408.1).
序列	EDNEY

靶点信息

研究背景	This gene is highly similar to the v-src gene of Rous sarcoma virus. This proto-oncogene may play a role in the regulation of embryonic development and cell growth. The protein encoded by this gene is a tyrosine-protein kinase whose activity can be inhibited by phosphorylation by c-SRC kinase. Mutations in this gene could be involved in the malignant progression of colon cancer. Two transcript variants encoding the same protein have been found for this gene.
基因ID	2534,3055,3932,4067,6714,7525

基因名	FYN,HCK,LCK,LYN,SRC,YES1
Swiss	P06241,P08631,P06239,P07948,P12931,P07947
别名	ASV;SRC1;THC6;c-SRC;p60-Src;SRC

产品验证



Western blot analysis of Phospho-SRC Family-Y416 expressed in NIH/3T3 using Phospho-SRC Family-Y 416 Rabbit pAb at 1:1000. Secondary antibody: HRP Goat Anti-Rabbit IgG (H+L) at 1:5000. Lysates/pr oteins: 30ug per lane. Blocking buffer: 5% non-fat dry milk in TBST. Detection: ECL Enhanced Kit. Exp osure time: 120s.

实验步骤

访问官网浏览详情: www.ablybio.cn