

Phospho-ATF2-T69/T71 Rabbit pAb

货号: B12991

产品信息

反应	Human,Mouse,Rat
宿主	Rabbit
克隆性	Polyclonal
预测反应	WB: Homo sapiens
应用	WB IHC
推荐浓度	WB: 1:500 - 1:2000 IHC: 1:50 - 1:200
理论分子量	13- 15kDa/23-24kDa/35-54kDa
实测分子量	68kDa
形式	Liquid
保存条件	Store at -20°C. Avoid freeze / thaw cycles. Buffer: PBS with 0.01% thiomersal,50% glycerol,pH7.3.
偶联物	Unconjugated
阳性对照	293T
细胞定位	Cytoplasm,Mitochondrion outer membrane,Nucleus
纯化	Affinity purification

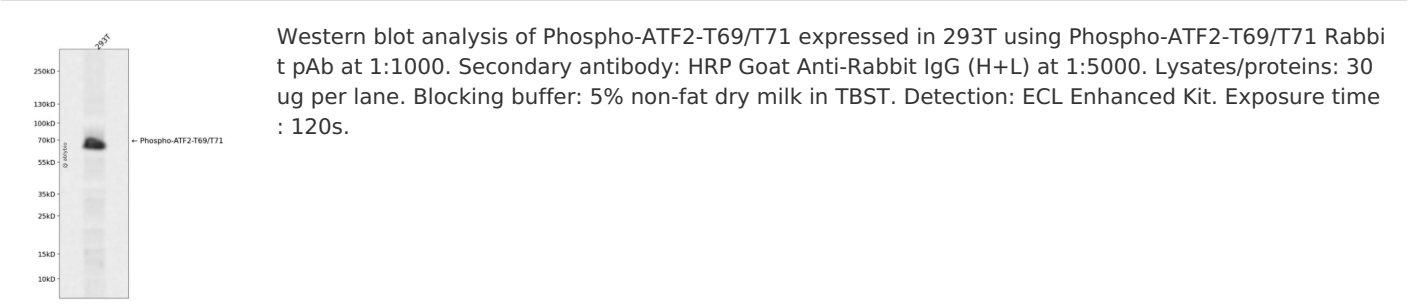
抗原信息

抗原信息	A synthetic phosphorylated peptide around T69 & T71 of human ATF2 (NP_001871.2).
序列	QTPTP

靶点信息

研究背景	This gene encodes a transcription factor that is a member of the leucine zipper family of DNA binding proteins. The encoded protein has been identified as a moonlighting protein based on its ability to perform mechanistically distinct functions This protein binds to the cAMP-responsive element (CRE), an octameric palindrome. It forms a homodimer or a heterodimer with c-Jun and stimulates CRE-dependent transcription . This protein is also a histone acetyltransferase (HAT) that specifically acetylates histones H2B and H4 in vitro; thus it may represent a class of sequence-specific factors that activate transcription by direct effects on chromatin components. The encoded protein may also be involved in cell's DNA damage response independent of its role in transcriptional regulation. Several alternatively spliced transcript variants have been found for this gene
基因ID	1386
基因名	ATF2
Swiss	P15336
别名	CRE-BP1;CREB-2;CREB2;HB16;TREB7;ATF2

产品验证



实验步骤

访问官网浏览详情: www.ablybio.cn