

MT-ATP8 Rabbit pAb

货号: B12729

产品信息

反应	Human,Mouse,Rat
宿主	Rabbit
克隆性	Polyclonal
预测反应	WB: Homo sapiens , Mus musculus, Homo sapiens
应用	WB IHC IF/ICC
推荐浓度	WB: 1:500 - 1:1000 IHC: 1:50 - 1:100 IF/ICC: 1:50 - 1:100
理论分子量	8kDa
实测分子量	12KDa
形式	Liquid
保存条件	Store at -20°C. Avoid freeze / thaw cycles. Buffer: PBS with 0.05% proclin300,50% glycerol,pH7.3.
偶联物	Unconjugated
阳性对照	HepG2,A-549,293F,Rat brain
细胞定位	mitochondrial inner membrane,mitochondrial proton-transporting ATP synthase complex,mitochondrial pr oton-transporting ATP synthase complex, coupling factor F(o)
纯化	Affinity purification

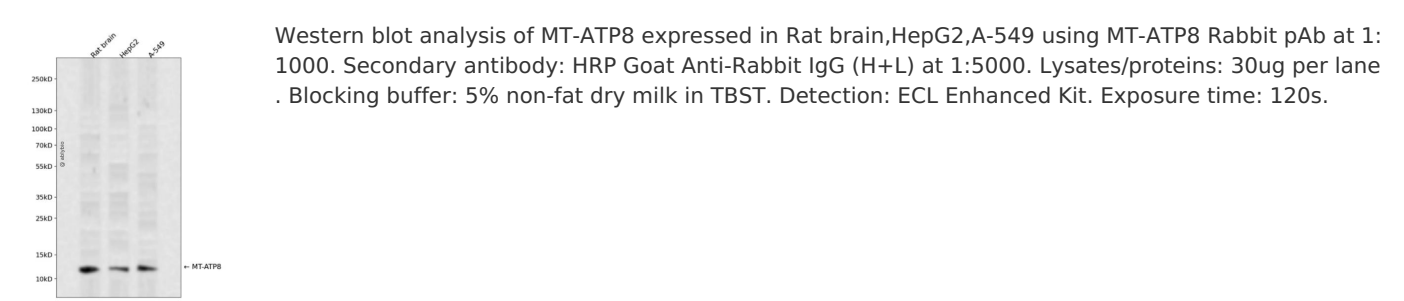
抗原信息

抗原信息	A synthetic peptide corresponding to a sequence within amino acids 1-68 of human MT-ATP8 (YP_003024 030.1).
序列	MPQLNTTVWPTMITPMLLTLFLITQLKMLNTNYHLPPSPKPMKMKNYNKPWEPKWTKICSLHSLPPQS

靶点信息

研究背景	Mitochondrial membrane ATP synthase (F1F0 ATP synthase or Complex V produces ATP from ADP in the presence of a proton gradient across the membrane which is generated by electron transport complexes of the respiratory chain. F-type ATPases consist of two structural domains, F(1 - containing the extramembraneous catalytic core and F(0 - containing the membrane proton channel, linked together by a central stalk and a peripheral stalk. During catalysis, ATP synthesis in the catalytic domain of F(1 is coupled via a rotary mechanism of the central stalk subunits to proton translocation. Part of the complex F(0 domain. Minor subunit located with subunit a in the membrane (By similarity.
基因ID	4509
基因名	MT-ATP8
Swiss	P03928
别名	ATPase8;MTATP8;ATP8;MT-ATP8

产品验证



实验步骤

访问官网浏览详情: www.ablybio.cn