

SLC10A1 Rabbit pAb

货号: **B12600**

产品信息

| | |
|-------|--|
| 反应 | Mouse,Rat |
| 宿主 | Rabbit |
| 克隆性 | Polyclonal |
| 预测反应 | WB: Mus musculus |
| 应用 | WB |
| 推荐浓度 | WB: 1:500 - 1:2000 |
| 理论分子量 | 38kDa |
| 实测分子量 | 38kDa |
| 形式 | Liquid |
| 保存条件 | Store at -20°C. Avoid freeze / thaw cycles. Buffer: PBS with 0.01% thiomersal,50% glycerol,pH7.3. |
| 偶联物 | Unconjugated |
| 阳性对照 | Mouse brain |
| 细胞定位 | Membrane,Multi-pass membrane protein |
| 纯化 | Affinity purification |

抗原信息

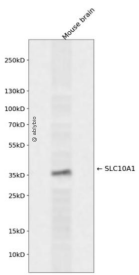
| | |
|------|--|
| 抗原信息 | A synthetic peptide corresponding to a sequence within amino acids 200 to the C-terminus of human SLC 10A1 (NP_003040.1). |
| 序列 | VAVTVLSAINVGKSIMFAMTPLLIIATSSLMPFIGFLLGYVLSALFCLNGRCRRTVSMETGCQNVQLCSTILNVAFPPEVIGPLFFPFLLYMIFQLGEGLLLIIFWCYEKFKTPKDKTKMIYTAATTEETIPGALGNGTYKGEDCSPCTA |

靶点信息

| | |
|------|--|
| 研究背景 | The protein encoded by this gene belongs to the sodium/bile acid cotransporter family, which are integral membrane glycoproteins that participate in the enterohepatic circulation of bile acids. Two homologous transporters are involved in the reabsorption of bile acids; the ileal sodium/bile acid cotransporter with an apical cell localization that absorbs bile acids from the intestinal lumen, bile duct and kidney, and the liver-specific sodium/bile acid cotransporter, represented by this protein, that is found in the basolateral membranes of hepatocytes. Bile acids are the catabolic product of cholesterol metabolism, hence this protein is important for cholesterol homeostasis. |
|------|--|

| | |
|-------|--------------|
| 基因ID | 6554 |
| 基因名 | SLC10A1 |
| Swiss | Q14973 |
| 别名 | SLC10A1;NTCP |

产品验证



Western blot analysis of SLC10A1 expressed in Mouse brain using SLC10A1 Rabbit pAb at 1:1000. Secondary antibody: HRP Goat Anti-Rabbit IgG (H+L) at 1:5000. Lysates/proteins: 30ug per lane. Blocking buffer: 5% non-fat dry milk in TBST. Detection: ECL Enhanced Kit. Exposure time: 120s.

实验步骤

访问官网浏览详情: www.ablybio.cn