

LIF Rabbit pAb

货号: B12594

产品信息

反应	Human
宿主	Rabbit
克隆性	Polyclonal
预测反应	WB: Mus musculus
应用	WB
推荐浓度	WB: 1:500 - 1:2000
理论分子量	9kDa/22kDa
实测分子量	35KDa
形式	Liquid
保存条件	Store at -20°C. Avoid freeze / thaw cycles. Buffer: PBS with 0.01% thiomersal,50% glycerol,pH7.3.
偶联物	Unconjugated
阳性对照	A-549,U-138MG,HL-60(Negative control),Mouse lung,NIH/3T3
细胞定位	Secreted
纯化	Affinity purification

抗原信息

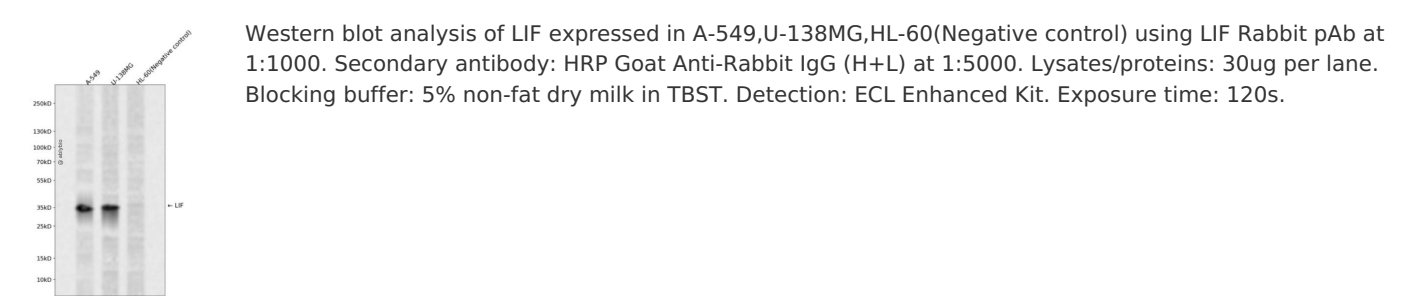
抗原信息	A synthetic peptide corresponding to a sequence within amino acids 1-100 of human LIF (NP_002300.1).
序列	MKVLAAAGVVPLLLVLHWKHGAGSPLPITPVNATCAIRHPCHNNLMNQIRSQLAQLNGSANALFILYYTAQGEPFPNNLDKLC GPNVTDFPPFHANGTEKA

靶点信息

研究背景	The protein encoded by this gene is a pleiotropic cytokine with roles in several different systems. It is involved in the induction of hematopoietic differentiation in normal and myeloid leukemia cells, induction of neuronal cell differentiation, regulator of mesenchymal to epithelial conversion during kidney development, and may also have a role in immune tolerance at the maternal-fetal interface. Alternatively spliced transcript variants encoding multiple isoforms have been observed for this gene.
基因ID	3976

基因名	LIF
Swiss	P15018
别名	LIF;CDF;DIA;HILDA;MLPLI

产品验证



实验步骤

访问官网浏览详情: www.ablybio.cn