

S100A10 Rabbit pAb

货号: B12477

产品信息

反应	Human,Mouse,Rat,Monkey
宿主	Rabbit
克隆性	Polyclonal
预测反应	WB: Rattus norvegicus , Mus musculus
应用	WB IHC IF/ICC
推荐浓度	WB: 1:100 - 1:500 IHC: 1:50 - 1:200 IF/ICC: 1:50 - 1:200
理论分子量	11kDa
实测分子量	11KDa
形式	Liquid
保存条件	Store at -20°C. Avoid freeze / thaw cycles. Buffer: PBS with 0.05% proclin300,50% glycerol,pH7.3.
偶联物	Unconjugated
阳性对照	U-87MG,Daudi negative,Mouse lung,Rat lung
细胞定位	cell surface,cytoplasm,extracellular exosome,extracellular region,extracellular space,nuclear matrix,plasma membrane protein complex
纯化	Affinity purification

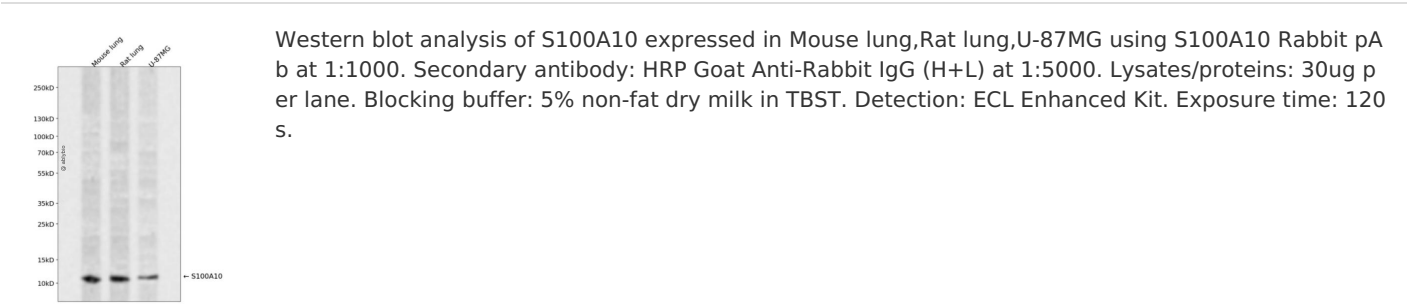
抗原信息

抗原信息	Recombinant fusion protein containing a sequence corresponding to amino acids 1-97 of human S100A10 (NP_002957.1).
序列	MPSQMEHAMETMMFTFHKFAGDKGYLTKEDLRLVMEKEFPGFLENQKDPLAVDKIMKDLDQCRDGKVGFGQSFFSLIAGLTIACNDYFVVHMKQKGKK

靶点信息

研究背景	The protein encoded by this gene is a member of the S100 family of proteins containing 2 EF-hand calcium-binding motifs. S100 proteins are localized in the cytoplasm and/or nucleus of a wide range of cells, and involved in the regulation of a number of cellular processes such as cell cycle progression and differentiation. S100 genes include at least 13 members which are located as a cluster on chromosome 1q21. This protein may function in exocytosis and endocytosis.
基因ID	6281
基因名	S100A10
Swiss	P60903
别名	S100A10;42C;ANX2L;ANX2LG;CAL1L;CLP11;Ca[1];GP11;P11;p10

产品验证



实验步骤

访问官网浏览详情: www.ablybio.cn