

PSME3 Rabbit pAb

货号: B12249

产品信息

| | |
|-------|--|
| 反应 | Human,Mouse,Rat |
| 宿主 | Rabbit |
| 克隆性 | Polyclonal |
| 预测反应 | WB: Homo sapiens IHC: Homo sapiens |
| 应用 | WB IHC IF/ICC |
| 推荐浓度 | WB: 1:1000 - 1:2000 IHC: 1:50 - 1:200 IF/ICC: 1:50 - 1:200 |
| 理论分子量 | 29kDa/30kDa |
| 实测分子量 | 35kDa |
| 形式 | Liquid |
| 保存条件 | Store at -20°C. Avoid freeze / thaw cycles. Buffer: PBS with 0.01% thiomersal,50% glycerol,pH7.3. |
| 偶联物 | Unconjugated |
| 阳性对照 | 293T,Raji,Jurkat,A-549,Mouse spleen,Mouse brain |
| 细胞定位 | Cytoplasm,Nucleus |
| 纯化 | Affinity purification |

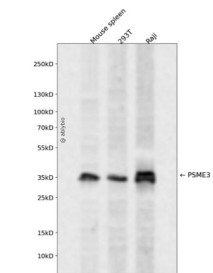
抗原信息

| | |
|------|---|
| 抗原信息 | A synthetic peptide corresponding to a sequence within amino acids 100 to the C-terminus of human PSM E3 (NP_005780.2). |
| 序列 | KVFVMPNGMLKSNQQLVDIIIEKVKPEIRLLIEKCNTVKMWVQLLIPRIEDGNNFGVSIQEETVAELRTVESEAASYLDQISRYY ITRAKLVSKIAKYPHVEDYRRTVTETDEKEYISLRLLISELRNQYVTLHDMILKNIEKIKRPRSSNAETLY |

靶点信息

| | |
|-------|--|
| 研究背景 | The 26S proteasome is a multicatalytic proteinase complex with a highly ordered structure composed of 2 complexes, a 20S core and a 19S regulator. The 20S core is composed of 4 rings of 28 non-identical subunits; 2 rings are composed of 7 alpha subunits and 2 rings are composed of 7 beta subunits. The 19S regulator is composed of a base, which contains 6 ATPase subunits and 2 non-ATPase subunits, and a lid, which contains up to 10 non-ATPase subunits. Proteasomes are distributed throughout eukaryotic cells at a high concentration and cleave peptides in an ATP/ubiquitin-dependent process in a non-lysosomal pathway. An essential function of a modified proteasome, the immunoproteasome, is the processing of class I MHC peptides. The immunoproteasome contains an alternate regulator, referred to as the 11S regulator or PA28, that replaces the 19S regulator. Three subunits (alpha, beta and gamma) of the 11S regulator have been identified. This gene encodes the gamma subunit of the 11S regulator. Six gamma subunits combine to form a homohexameric ring. Alternate splicing results in multiple transcript variants. |
| 基因ID | 10197 |
| 基因名 | PSME3 |
| Swiss | P61289 |
| 别名 | PSME3;HEL-S-283;Ki;PA28-gamma;PA28G;PA28gamma;REG-GAMMA |

产品验证



Western blot analysis of PSME3 expressed in Mouse spleen,293T,Raji using PSME3 Rabbit pAb at 1:1000 . Secondary antibody: HRP Goat Anti-Rabbit IgG (H+L) at 1:5000. Lysates/proteins: 30ug per lane. Blocking buffer: 5% non-fat dry milk in TBST. Detection: ECL Enhanced Kit. Exposure time: 120s.

实验步骤

访问官网浏览详情: www.ablybio.cn