

IL-1 alpha Rabbit pAb

货号: B12245

产品信息

反应	Human,Mouse,Rat
宿主	Rabbit
克隆性	Polyclonal
预测反应	WB: Homo sapiens , Rattus norvegicus
应用	WB IHC
推荐浓度	WB: 1:500 - 1:1000 IHC: 1:50 - 1:200
理论分子量	30kDa
实测分子量	31KDa/21KDa
形式	Liquid
保存条件	Store at -20°C. Avoid freeze / thaw cycles. Buffer: PBS with 0.05% proclin300,50% glycerol,pH7.3.
偶联物	Unconjugated
阳性对照	Rat lung
细胞定位	Secreted
纯化	Affinity purification

抗原信息

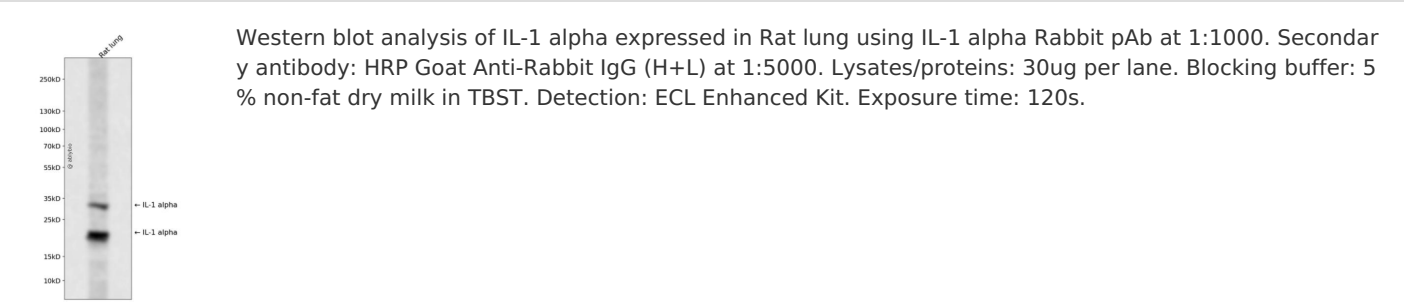
抗原信息	Recombinant fusion protein containing a sequence corresponding to amino acids 113-267 of human IL-1 alpha (NP_000566.3).
序列	SAPFSFLSNVKYNFMRIIKYEFILNDALNQSIIRANDQYLTAALHNLDEAVKFDMGAYKSSKDDAKITVILRISKTLQLYVTAQ DEDQPVLLKEMPEIPKTITGSETNLLFFWETHGTKNYFTSVAHPNLFIA TKQDYWVCLAGGPPSITDFQIL

靶点信息

研究背景	The protein encoded by this gene is a member of the interleukin 1 cytokine family. This cytokine is a pleio tropic cytokine involved in various immune responses, inflammatory processes, and hematopoiesis. This cytokine is produced by monocytes and macrophages as a proprotein, which is proteolytically processed and released in response to cell injury, and thus induces apoptosis. This gene and eight other interleukin 1 family genes form a cytokine gene cluster on chromosome 2. It has been suggested that the polymorph ism of these genes is associated with rheumatoid arthritis and Alzheimer's disease.
------	--

基因ID	3552
基因名	IL1A
Swiss	P01583
别名	IL1A;IL-1A;IL1;IL1-ALPHA;IL1F1

产品验证



实验步骤

访问官网浏览详情: www.ablybio.cn