

Phospho-RB-S807/811 Rabbit pAb

货号: B12205

产品信息

| | |
|-------|--|
| 反应 | Human,Mouse,Rat |
| 宿主 | Rabbit |
| 克隆性 | Polyclonal |
| 预测反应 | WB: Homo sapiens , Mus musculus |
| 应用 | WB |
| 推荐浓度 | WB: 1:500 - 1:2000 |
| 理论分子量 | 106kDa |
| 实测分子量 | 120kDa |
| 形式 | Liquid |
| 保存条件 | Store at -20°C. Avoid freeze / thaw cycles. Buffer: PBS with 0.02% sodium azide,50% glycerol,pH7.3. |
| 偶联物 | Unconjugated |
| 阳性对照 | HT-29 |
| 细胞定位 | Nucleus |
| 纯化 | Affinity purification |

抗原信息

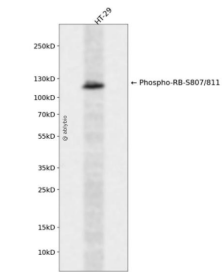
| | |
|------|--|
| 抗原信息 | A synthetic phosphorylated peptide around S807 & S811 of human RB (NP_000312.2). |
| 序列 | SPLKS |

靶点信息

| | |
|------|---|
| 研究背景 | The protein encoded by this gene is a negative regulator of the cell cycle and was the first tumor suppressor gene found. The encoded protein also stabilizes constitutive heterochromatin to maintain the overall chromatin structure. The active, hypophosphorylated form of the protein binds transcription factor E2F1. Defects in this gene are a cause of childhood cancer retinoblastoma (RB), bladder cancer, and osteogenic sarcoma. |
| 基因ID | 5925 |

| | |
|-------|---|
| 基因名 | RB1 |
| Swiss | P06400 |
| 别名 | OSRC;PPP1R130;RB;p105-Rb;pRb;pp110;RB1;Rb |

产品验证



Western blot analysis of Phospho-RB-S807/811 expressed in HT-29 using Phospho-RB-S807/811 Rabbit pAb at 1:1000. Secondary antibody: HRP Goat Anti-Rabbit IgG (H+L) at 1:5000. Lysates/proteins: 30ug per lane. Blocking buffer: 5% non-fat dry milk in TBST. Detection: ECL Enhanced Kit. Exposure time: 12 0s.

实验步骤

访问官网浏览详情: www.ablybio.cn