

RPL24 Rabbit pAb

货号: B12007

产品信息

| | |
|-------|--|
| 反应 | Human,Mouse,Rat |
| 宿主 | Rabbit |
| 克隆性 | Polyclonal |
| 预测反应 | qRT-PCR: Mus musculus WB: Mus musculus , Homo sapiens |
| 应用 | WB IHC IF/ICC |
| 推荐浓度 | WB: 1:500 - 1:2000 IHC: 1:50 - 1:200 IF/ICC: 1:50 - 1:100 |
| 理论分子量 | 17kDa |
| 实测分子量 | 18kDa |
| 形式 | Liquid |
| 保存条件 | Store at -20°C. Avoid freeze / thaw cycles. Buffer: PBS with 0.01% thiomersal,50% glycerol,pH7.3. |
| 偶联物 | Unconjugated |
| 阳性对照 | HT-29,HepG2,HeLa |
| 细胞定位 | cytoplasm,cytosol,cytosolic ribosome,endoplasmic reticulum,extracellular exosome,synapse |
| 纯化 | Affinity purification |

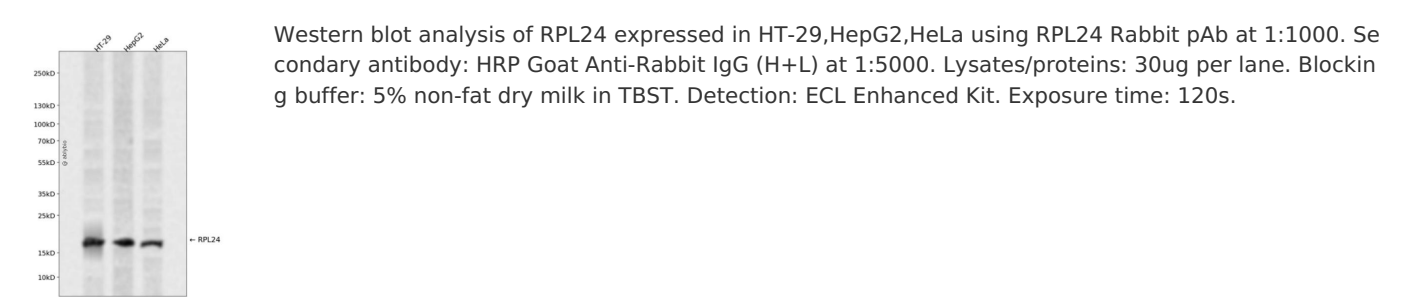
抗原信息

| | |
|------|--|
| 抗原信息 | Recombinant fusion protein containing a sequence corresponding to amino acids 38-157 of human RPL24 (NP_000977.1). |
| 序列 | SAFLSKRNPRQINWTVLYRRKHKKGQSEEIQKKRTRRAVKFQRAITGASLADIMAKRNQKPEVRKAQREQAIRAAKEAKKA KQASKKTAMAAAKAPTKAAPKQKIVKPVKVSAPRVGGKR |

靶点信息

| | |
|-------|---|
| 研究背景 | Ribosomes, the organelles that catalyze protein synthesis, consist of a small 40S subunit and a large 60S subunit. Together these subunits are composed of 4 RNA species and approximately 80 structurally distinct proteins. This gene encodes a ribosomal protein that is a component of the 60S subunit. The protein belongs to the L24E family of ribosomal proteins. It is located in the cytoplasm. This gene has been referred to as ribosomal protein L30 because the encoded protein shares amino acid identity with the L30 ribosomal proteins from <i>S. cerevisiae</i> ; however, its official name is ribosomal protein L24. As is typical for genes encoding ribosomal proteins, there are multiple processed pseudogenes of this gene dispersed throughout the genome. |
| 基因ID | 6152 |
| 基因名 | RPL24 |
| Swiss | P83731 |
| 别名 | RPL24;HEL-S-310;L24 |

产品验证



实验步骤

访问官网浏览详情: www.ablybio.cn