

# PSMB6 Rabbit pAb

货号: B11943

## 产品信息

反应	Human,Mouse,Rat
宿主	Rabbit
克隆性	Polyclonal
预测反应	<b>WB:</b> Homo sapiens
应用	<a href="#">WB</a> <a href="#">IHC</a> <a href="#">IF/ICC</a>
推荐浓度	<b>WB:</b> 1:500 - 1:1000 <b>IHC:</b> 1:50 - 1:100 <b>IF/ICC:</b> 1:50 - 1:100
理论分子量	25kDa
实测分子量	22KDa
形式	Liquid
保存条件	Store at -20°C. Avoid freeze / thaw cycles. Buffer: PBS with 0.05% proclin300,50% glycerol,pH7.3.
偶联物	Unconjugated
阳性对照	HeLa,HepG2,MCF7
细胞定位	Cytoplasm,Nucleus
纯化	Affinity purification

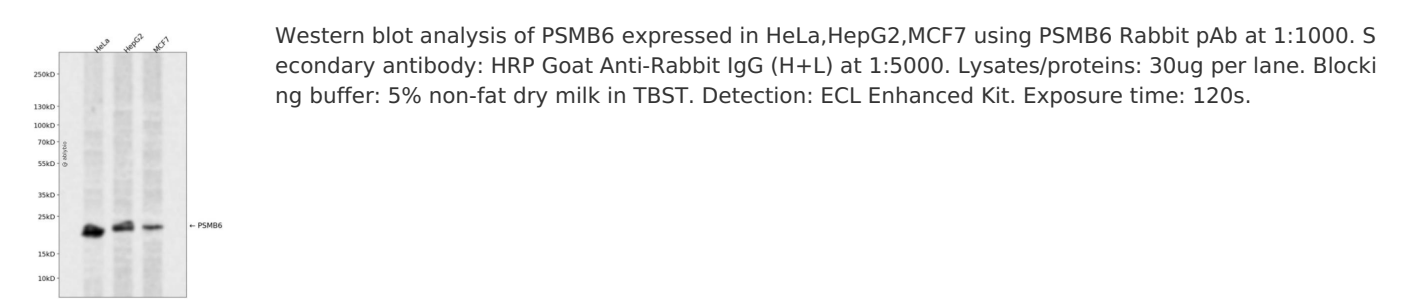
## 抗原信息

抗原信息	Recombinant fusion protein containing a sequence corresponding to amino acids 35-239 of human PSMB 6 (NP_002789.1).
序列	TTIMAVQFDGGVVLGADSRITTTGSYIANRVTDKLTPIHDRIFCCRSGSAADTQAVADAVTYQLGFHSIELNEPPLVHTAASL FKEMCYRYREDLMAGIIIAGWDPQEGGQVYSVPMGGMMVRQSFAIGGSGSSYIYGVDATYREGMTKEECLQFTANALA LAMERDGSSEGGVIRLAAIAESGVERQVLLGDQIPKFAVATLPPA

## 靶点信息

研究背景	The proteasome is a multicatalytic proteinase complex with a highly ordered ring-shaped 20S core structure. The core structure is composed of 4 rings of 28 non-identical subunits; 2 rings are composed of 7 alpha subunits and 2 rings are composed of 7 beta subunits. Proteasomes are distributed throughout eukaryotic cells at a high concentration and cleave peptides in an ATP/ubiquitin-dependent process in a non-lysosomal pathway. The encoded protein is a member of the proteasome B-type family, also known as the T1 B family, and is a 20S core beta subunit in the proteasome. Alternatively spliced transcript variants encoding multiple isoforms have been observed for this gene.
基因ID	5694
基因名	PSMB6
Swiss	P28072
别名	PSMB6;DELTA;LMPY;Y

产品验证



实验步骤

访问官网浏览详情: [www.ablybio.cn](http://www.ablybio.cn)