

# RPS2 Rabbit pAb

货号: B11912

## 产品信息

反应	Human,Mouse,Rat
宿主	Rabbit
克隆性	Polyclonal
预测反应	<b>WB:</b> Homo sapiens , Mus musculus , Eriocheir sinensis H.Milne-Edwards
应用	<a href="#">WB</a> <a href="#">IHC</a>
推荐浓度	<b>WB:</b> 1:500 - 1:2000 <b>IHC:</b> 1:50 - 1:200
理论分子量	31kDa
实测分子量	38kDa
形式	Liquid
保存条件	Store at -20°C. Avoid freeze / thaw cycles. Buffer: PBS with 0.02% sodium azide,50% glycerol,pH7.3.
偶联物	Unconjugated
阳性对照	U-87MG,U-251MG,MCF7,HeLa
细胞定位	cytoplasm,cytosol,cytosolic ribosome,extracellular exosome,focal adhesion,nucleoplasm,nucleus
纯化	Affinity purification

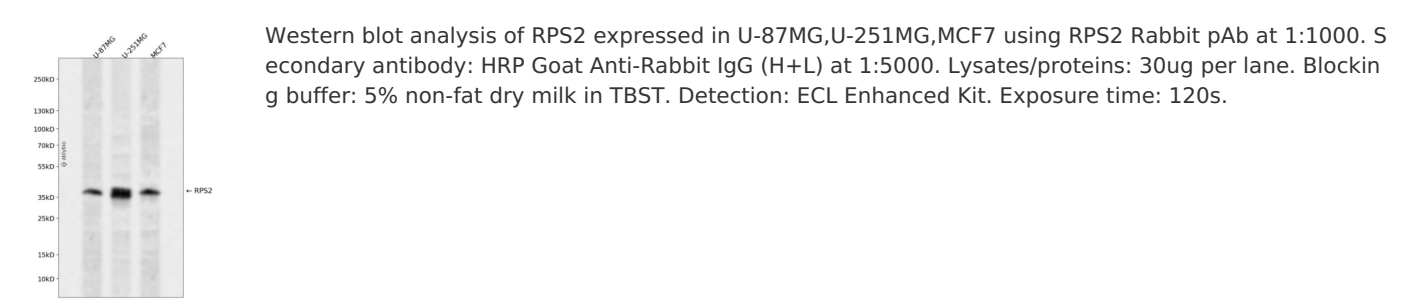
## 抗原信息

抗原信息	Recombinant fusion protein containing a sequence corresponding to amino acids 1-293 of human RPS2 ( NP_002943.2).
序列	MADDAGAAGGPGGGPGGPMGNRGGFRGGFGSGIRGRGRGRGRGRGRGRGARGGKAEDKEWMPVTKLGRLVKDMK IKSLEEIYLFSLPIKESEIIDFFLGASLKDEVLKIMPVQKQTRAGQRTRFKAFVAIGDYNGHVGLGVKCSKEVATAIRGAILAKL SIVPVRRGYWGNKIGKPHTVPCKVTGRCGSVLVRLIPAPRGTGIVSAPVPKKLLMMAGIDDCYTSARGCTATLGNFAKATF DAISKTYSYLTPDLWKETVFTKSPYQEFTDHLVKTHTRVSVQRTQAPAVATT

## 靶点信息

研究背景	Ribosomes, the organelles that catalyze protein synthesis, consist of a small 40S subunit and a large 60S subunit. Together these subunits are composed of 4 RNA species and approximately 80 structurally distinct proteins. This gene encodes a ribosomal protein that is a component of the 40S subunit. The protein belongs to the S5P family of ribosomal proteins. It is located in the cytoplasm. This gene shares sequence similarity with mouse LLRep3. It is co-transcribed with the small nucleolar RNA gene U64, which is located in its third intron. As is typical for genes encoding ribosomal proteins, there are multiple processed pseudogenes of this gene dispersed through the genome.
基因ID	6187
基因名	RPS2
Swiss	P15880
别名	RPS2;LLREP3;S2

产品验证



实验步骤

访问官网浏览详情: [www.ablybio.cn](http://www.ablybio.cn)