

RORA Rabbit pAb

货号: B11906

产品信息

反应	Human,Mouse,Rat
宿主	Rabbit
克隆性	Polyclonal
预测反应	WB: Homo sapiens , Rattus norvegicus IF: Rattus norvegicus
应用	WB
推荐浓度	WB: 1:500 - 1:1000
理论分子量	53kDa/58kDa/61kDa/63kDa
实测分子量	70KDa
形式	Liquid
保存条件	Store at -20°C. Avoid freeze / thaw cycles. Buffer: PBS with 0.01% thiomersal,50% glycerol,pH7.3.
偶联物	Unconjugated
阳性对照	Rat liver
细胞定位	Nucleus
纯化	Affinity purification

抗原信息

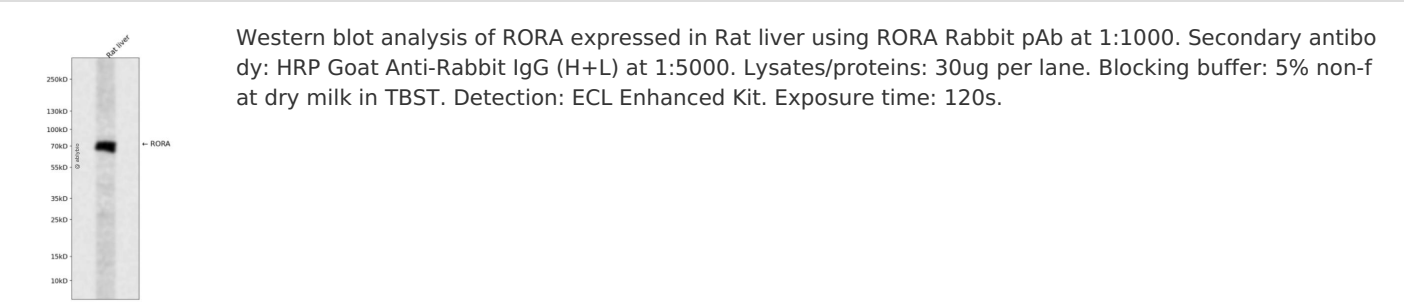
抗原信息	Recombinant fusion protein containing a sequence corresponding to amino acids 175-255 of human ROR A (NP_599023.1).
序列	QPGAEPLTPTYNISANGLTELHDDLSNYIDGHTPEGSKADSAVSSFYLDIQSPDQSGLDINGIKPEPICDYTPASGFFP

靶点信息

研究背景	The protein encoded by this gene is a member of the NR1 subfamily of nuclear hormone receptors. It can bind as a monomer or as a homodimer to hormone response elements upstream of several genes to enhance the expression of those genes. The encoded protein has been shown to interact with NM23-2, a nucleoside diphosphate kinase involved in organogenesis and differentiation, as well as with NM23-1, the product of a tumor metastasis suppressor candidate gene. Also, it has been shown to aid in the transcriptional regulation of some genes involved in circadian rhythm. Four transcript variants encoding different isoforms have been described for this gene.
------	--

基因ID	6095
基因名	RORA
Swiss	P35398
别名	RORA;NR1F1;ROR1;ROR2;ROR3;RZR-ALPHA;RZRA

产品验证



实验步骤

访问官网浏览详情: www.ablybio.cn