

Kdm6b Rabbit pAb

货号: B11737

产品信息

反应	Human,Mouse
宿主	Rabbit
克隆性	Polyclonal
预测反应	WB: Homo sapiens , Mus musculus IF: Sus scrofa
应用	WB IF/ICC
推荐浓度	WB: 1:500 - 1:2000 IF/ICC: 1:50 - 1:200
理论分子量	176kDa
实测分子量	170kDa
形式	Liquid
保存条件	Store at -20°C. Avoid freeze / thaw cycles. Buffer: PBS with 0.01% thiomersal,50% glycerol,pH7.3.
偶联物	Unconjugated
阳性对照	SH-SY5Y,K-562,mouse brain
细胞定位	Nucleus
纯化	Affinity purification

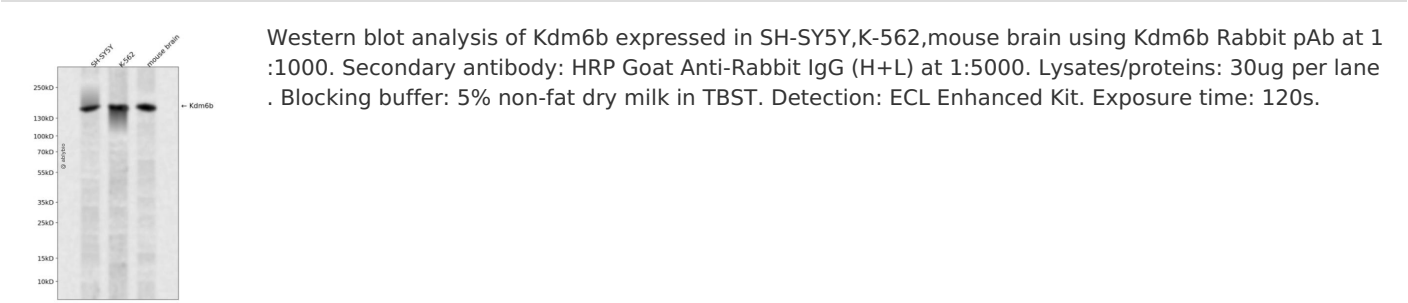
抗原信息

抗原信息	Recombinant fusion protein containing a sequence corresponding to amino acids 265-450 of mouse Kdm 6b (NP_001017426.1).
序列	PPLPGLAISPPFQLTKPGLWNTLHGDAWGPERKGSAPPERQEQRHSMPHSYYPAPAYSAHPPSHRLVPNTPLGPGPRPP GAESHGCLPATRPPGSDLRESRVQRSRMDSSVSPAASTACVPYAPSRPPGLPGTSSSSSSSSSSNNTGLRGVEPSGIPG ADHYQNPALISPHQARLGPSAHSSR

靶点信息

研究背景	Enables beta-catenin binding activity; histone H3-tri/di-methyl-lysine-27 demethylase activity; and sequence-specific DNA binding activity. Involved in several processes, including histone H3-K27 demethylation; mesodermal cell differentiation; and positive regulation of cold-induced thermogenesis. Acts upstream of or within several processes, including cellular response to hydrogen peroxide; histone demethylation; and positive regulation of transcription by RNA polymerase II. Located in nucleus. Is expressed in several structures, including brain; gut; liver; metanephros; and olfactory epithelium. Orthologous to human KDM6B (lysine demethylase 6B).
基因ID	216850
基因名	
Swiss	
别名	KDM6B;JMJD3;Kdm6b

产品验证



实验步骤

访问官网浏览详情: www.ablybio.cn