

CCR6 Rabbit pAb

货号: B10791

产品信息

反应	Human
宿主	Rabbit
克隆性	Polyclonal
预测反应	
应用	WB
推荐浓度	WB: 1:500 - 1:2000
理论分子量	42kDa
实测分子量	52kDa
形式	Liquid
保存条件	Store at -20°C. Avoid freeze / thaw cycles. Buffer: PBS with 0.01% thiomersal,50% glycerol,pH7.3.
偶联物	Unconjugated
阳性对照	LO2
细胞定位	cell surface,external side of plasma membrane,plasma membrane,sperm flagellum,sperm plasma membrane
纯化	Affinity purification

抗原信息

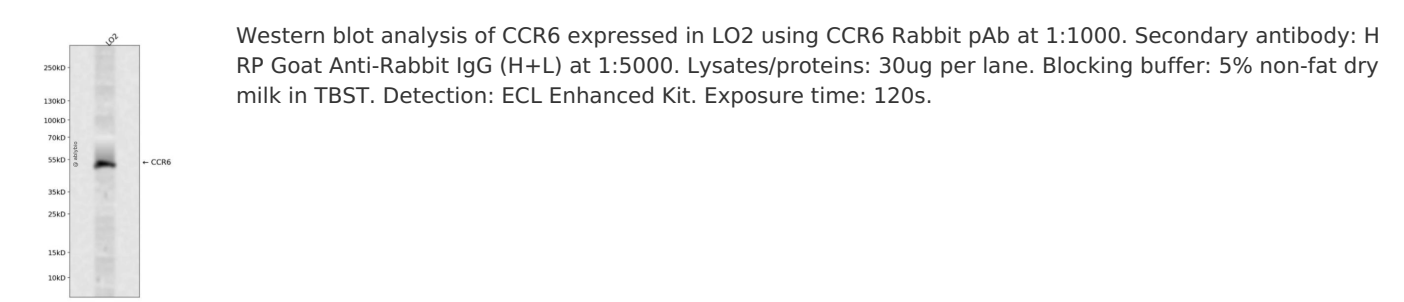
抗原信息	A synthetic peptide corresponding to a sequence within amino acids 300 to the C-terminus of human CCR6 (NP_004358.2).
序列	VTEVLAFLHCCLNPVLYAFIGQKFRNYFLKILKDLWCVRRKYKSSGFSCAGRYSENISRQTSETADNDNASSFTM

靶点信息

研究背景	This gene encodes a member of the beta chemokine receptor family, which is predicted to be a seven transmembrane protein similar to G protein-coupled receptors. The gene is preferentially expressed by immature dendritic cells and memory T cells. The ligand of this receptor is macrophage inflammatory protein 3 alpha (MIP-3 alpha). This receptor has been shown to be important for B-lineage maturation and antigen-driven B-cell differentiation, and it may regulate the migration and recruitment of dendritic and T cells during inflammatory and immunological responses. Alternatively spliced transcript variants that encode the same protein have been described for this gene.
------	--

基因ID	1235
基因名	CCR6
Swiss	P51684
别名	CCR6;BN-1;C-C CKR-6;CC-CKR-6;CCR-6;CD196;CKR-L3;CKRL3;CMKBR6;DCR2;DRY6;GPR29;GPRCY4;STRL2 2

产品验证



实验步骤

访问官网浏览详情: www.ablybio.cn