

MAPRE1 Rabbit pAb

货号: B10701

产品信息

反应	Human,Mouse,Rat
宿主	Rabbit
克隆性	Polyclonal
预测反应	WB: Tianfu broilers
应用	WB IF/ICC
推荐浓度	WB: 1:500 - 1:2000 IF/ICC: 1:50 - 1:200
理论分子量	29kDa
实测分子量	34kDa
形式	Liquid
保存条件	Store at -20°C. Avoid freeze / thaw cycles. Buffer: PBS with 0.01% thiomersal,50% glycerol,pH7.3.
偶联物	Unconjugated
阳性对照	B-cell,U-87MG,LO2,HT-29,NIH/3T3,Mouse lung,Mouse spleen,Rat heart
细胞定位	Cytoplasm,centrosome,cytoskeleton,microtubule organizing center
纯化	Affinity purification

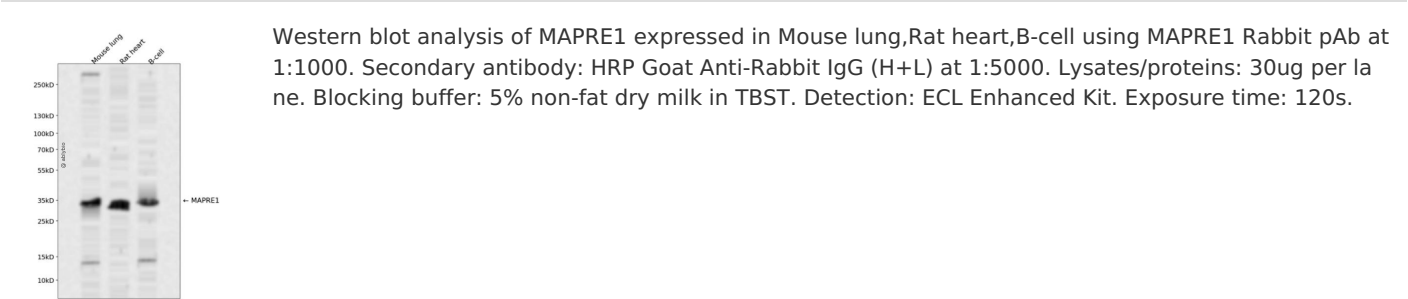
抗原信息

抗原信息	Recombinant fusion protein containing a sequence corresponding to amino acids 134-268 of human MAP RE1 (NP_036457.1).
序列	ETAVAPSLVAPALNPKKPLTSSSAAPQRPISQTQRTAAAPKAGPGVVRKNPGVGNGDDEAAELMQQVNVLKLTVEDLEKE RDFYFGKLRNIELICQENEGENDPVLQRIVDILYATDEGFVIPDEGGPQEEQEEY

靶点信息

研究背景	The protein encoded by this gene was first identified by its binding to the APC protein which is often mutated in familial and sporadic forms of colorectal cancer. This protein localizes to microtubules, especially the growing ends, in interphase cells. During mitosis, the protein is associated with the centrosomes and spindle microtubules. The protein also associates with components of the dynactin complex and the intermediate chain of cytoplasmic dynein. Because of these associations, it is thought that this protein is involved in the regulation of microtubule structures and chromosome stability. This gene is a member of the RP/EB family.
基因ID	22919
基因名	MAPRE1
Swiss	Q15691
别名	MAPRE1;EB1

产品验证



实验步骤

访问官网浏览详情: www.ablybio.cn