

HER2/ErbB2 Rabbit pAb

货号: **B10281**

产品信息

反应	Human,Mouse,Rat
宿主	Rabbit
克隆性	Polyclonal
预测反应	WB: Mus musculus , Homo sapiens
应用	WB IHC
推荐浓度	WB: 1:100 - 1:500 IHC: 1:50 - 1:200
理论分子量	62kDa/70kDa/97kDa/134kDa/136kDa/137kDa
实测分子量	185KDa
形式	Liquid
保存条件	Store at -20°C. Avoid freeze / thaw cycles. Buffer: PBS with 0.02% sodium azide,50% glycerol,pH7.3.
偶联物	Unconjugated
阳性对照	SK-BR-3,Mouse lung
细胞定位	Cell membrane,Cytoplasm,Nucleus,Nucleus,Single-pass type I membrane protein,perinuclear region
纯化	Affinity purification

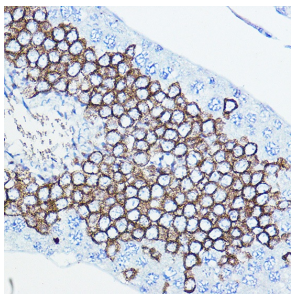
抗原信息

抗原信息	A synthetic peptide corresponding to a sequence within amino acids 1160 to the C-terminus of human HER2/ErbB2 (NP_004439.2).
序列	ARPAGATLERPKTLSPGKNGVVKDVFAFGGAVENPEYLTPQGGAAPQHPPPAFSPAFDNLYYWDQDPPERGAPPSTFK GTPTAENPEYLGLDVPV

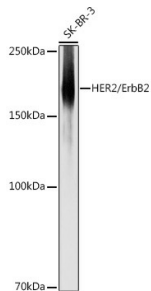
靶点信息

研究背景	This gene encodes a member of the epidermal growth factor (EGF) receptor family of receptor tyrosine kinases. This protein has no ligand binding domain of its own and therefore cannot bind growth factors. However, it does bind tightly to other ligand-bound EGF receptor family members to form a heterodimer, stabilizing ligand binding and enhancing kinase-mediated activation of downstream signalling pathways, such as those involving mitogen-activated protein kinase and phosphatidylinositol-3 kinase. Allelic variations at amino acid positions 654 and 655 of isoform a (positions 624 and 625 of isoform b) have been reported, with the most common allele, Ile654/Ile655, shown here. Amplification and/or overexpression of this gene has been reported in numerous cancers, including breast and ovarian tumors. Alternative splicing results in several additional transcript variants, some encoding different isoforms and others that have not been fully characterized.
基因ID	2064
基因名	ERBB2
Swiss	P04626
别名	ERBB2;CD340;HER-2;HER-2/neu;HER2;MLN 19;NEU;NGL;TKR1;erb-b2 receptor tyrosine kinase 2;HER2/ErbB2;ErbB2;MLN19

产品验证



Immunohistochemistry of paraffin-embedded rat testis using HER2/ErbB2 Rabbit pAb at dilution of 1:100 (40x lens). Perform high pressure antigen retrieval with 10 mM citrate buffer pH 6.0 before commencing with IHC staining protocol.



Western blot analysis of extracts of SK-BR-3 cells, using HER2/ErbB2 antibody at 1:500 dilution. Secondary antibody: HRP Goat Anti-Rabbit IgG (H+L) at 1:10000 dilution. Lysates/proteins: 25 µg per lane. Blocking buffer: 3% nonfat dry milk in TBST. Detection: ECL Basic Kit. Exposure time: 1s.

实验步骤

访问官网浏览详情: www.ablybio.cn