

CDK6 Rabbit pAb

货号: **B10279**

产品信息

反应	Human,Mouse
宿主	Rabbit
克隆性	Polyclonal
预测反应	WB: HepG2 , Mus musculus , Homo sapiens IF: Homo sapiens IHC: Homo sapiens
应用	WB IHC IF/ICC IP
推荐浓度	WB: 1:500 - 1:1000 IHC: 1:50 - 1:200 IF/ICC: 1:50 - 1:200 IP: 1:50 - 1:100
理论分子量	36kDa
实测分子量	40KDa
形式	Liquid
保存条件	Store at -20°C. Avoid freeze / thaw cycles. Buffer: PBS with 0.05% proclin300,50% glycerol,pH7.3.
偶联物	Unconjugated
阳性对照	HeLa
细胞定位	Cell projection,Cytoplasm,Nucleus,centrosome,cytoskeleton,microtubule organizing center,ruffle
纯化	Affinity purification

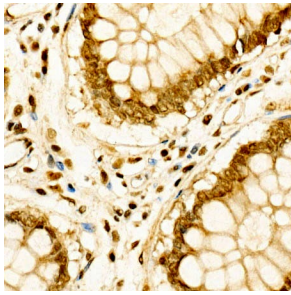
抗原信息

抗原信息	Recombinant fusion protein containing a sequence corresponding to amino acids 1-326 of human CDK6 (NP_001250.1).
序列	MEKDGLCRADQQYECVAEIGEGAYGKVKARDLKNNGRFVALKRVRVQTGEEGMPLSTIREVAVLRHLETFEHPNVVRLFDVCTVSRTDRETCLTLVFEHVDQDLTTYLDKVPEPGVPTETIKDMMFQLLRGLDFLHSHRVVHRDLKPQNILVTSSGQIKLADFGRLARIYSFQMALTSVVVTLWYRAPEVLLQSSYATPVDLWSVGCIFAEMFRRKPLFRGSSDVDQLGKILDVIGLPGEEDWPRDVALPRQAFHSKSAQPIEFVTDIDELGKDLLLKLCTFNPAKRISAYSALSHPYFDLERCKENLDSHLPPSQNTSELN TA

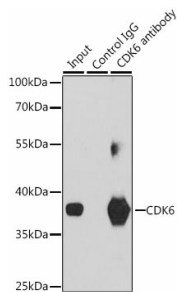
靶点信息

研究背景	The protein encoded by this gene is a member of the cyclin-dependent protein kinase (CDK) family. CDK family members are highly similar to the gene products of <i>Saccharomyces cerevisiae cdc28</i> , and <i>Schizosaccharomyces pombe cdc2</i> , and are known to be important regulators of cell cycle progression. This kinase is a catalytic subunit of the protein kinase complex that is important for cell cycle G1 phase progression and G1/S transition. The activity of this kinase first appears in mid-G1 phase, which is controlled by the regulatory subunits including D-type cyclins and members of INK4 family of CDK inhibitors. This kinase, as well as CDK4, has been shown to phosphorylate, and thus regulate the activity of, tumor suppressor protein Rb. Expression of this gene is up-regulated in some types of cancer. Multiple alternatively spliced variants, encoding the same protein, have been identified.
基因ID	1021
基因名	CDK6
Swiss	Q00534
别名	CDK6;MCPH12;PLSTIRE

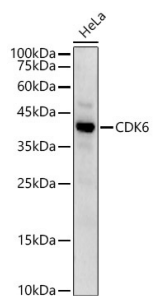
产品验证



Immunohistochemistry of paraffin-embedded human colon carcinoma using CDK6 Rabbit pAb at a dilution of 1:100 (40x lens). Perform high pressure antigen retrieval with 10 mM citrate buffer pH 6.0 before commencing with IHC staining protocol.



Immunoprecipitation analysis of 200ug extracts of Jurkat cells, using 3 ug CDK6 antibody. Western blot was performed from the immunoprecipitate using CDK6 antibody at a dilution of 1:1000.



Western blot analysis of HeLa, using CDK6 antibody at 1:900 dilution. Secondary antibody: HRP Goat Anti-Rabbit IgG (H+L) at 1:10000 dilution. Lysates/proteins: 25ug per lane. Blocking buffer: 3% nonfat dry milk in TBST. Detection: ECL Enhanced Kit. Exposure time: 30s.

实验步骤

访问官网浏览详情: www.ablybio.cn